



**TEXAS**  
Department of Family  
and Protective Services

# Presentation to the House Appropriations Committee

---

**Stephanie Muth**

**DFPS Commissioner**

**February 18, 2025**

# DFPS Agency Overview

## Core Functions

### Statewide Intake (SWI)

Operates 24 hours a day, seven days a week, as the centralized point of intake for reporting suspected incidents of abuse, neglect, and exploitation and childcare licensing standards violations.

### Adult Protective Services (APS)

Protects adults living in their own homes who have disabilities or who are 65 years old or older by investigating reports of abuse, neglect, and exploitation and providing short-term services.

### Child Protective Investigations (CPI)

Investigates reports of abuse, neglect, and exploitation, including those within certain residential facilities.

### Child Protective Services (CPS)

Assesses and places children in foster care when they are not safe in their own homes, and for ensuring the best permanency outcomes for children in care.





**TEXAS**  
Department of Family  
and Protective Services

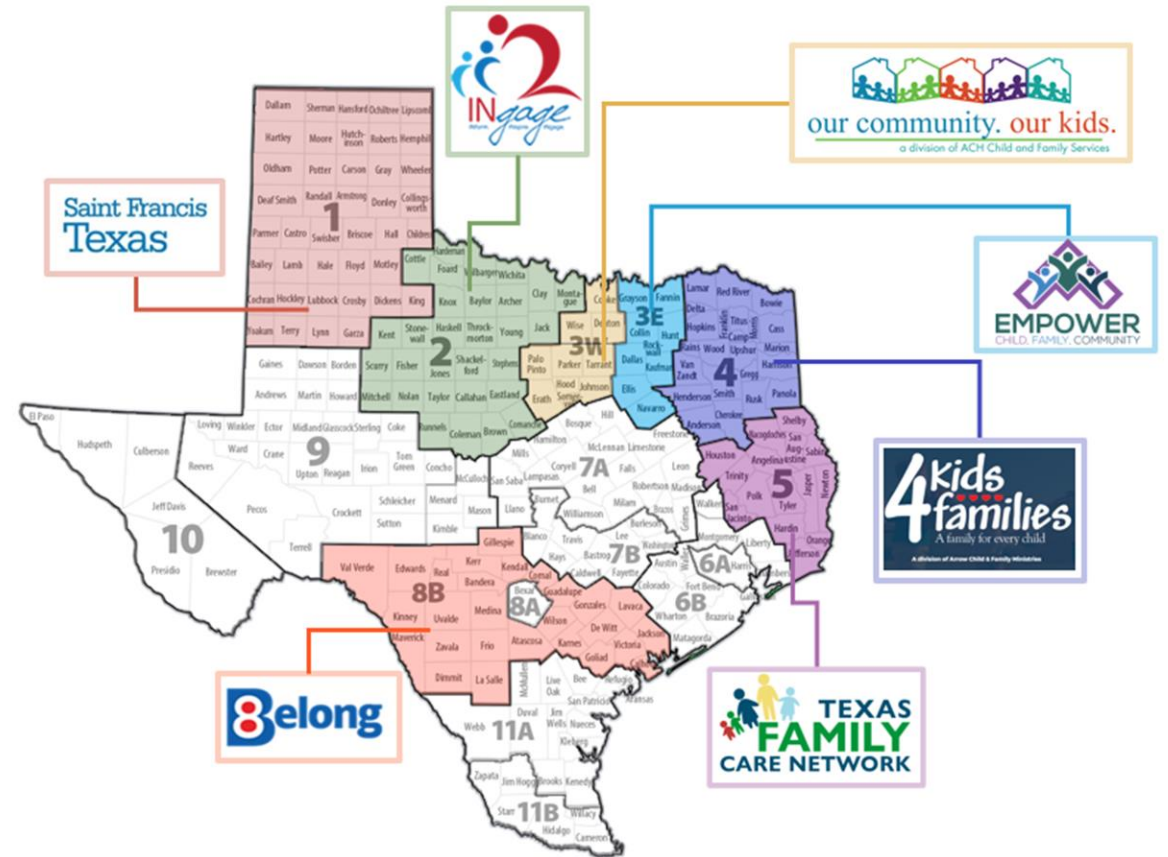
# Community-Based Care

---

# Community-Based Care

Senate Bill 11, 85<sup>th</sup> Texas Legislature, transformed Foster Care Redesign into the model known today as Community-Based Care (CBC)

CBC is a community-based approach to meet the unique needs of families and children by contracting with a nonprofit or governmental agency to provide direct case management of foster youth in the community area.



# CBC: Implementation Stages

## Stage I

Foster Care Network Development  
Placement Services  
Child & Adolescent Needs and Strengths (CANS) Assessment  
Coordinated Child Plan of Services  
Purchased Services for Children and Youth  
Preparation for Adult Living (PAL) for youth in paid foster care  
Daycare Coordination

## Stage II

All Stage I Duties  
Case Management Services  
Plan of Service for Children & Families  
Purchased Services for Families  
Family Reunification Services  
Kinship Services  
Transitional Living Services - PAL for all youth  
Interstate Compact on the Placement of Children  
Adoption and Post-Adoption services

## Stage III

Stage I and Stage II Duties  
Provides financial incentive and remedies based on performance outcomes  
Note: Incentives distributed must be reinvested to improve the quality of care to youth





# CBC: Implementation Status

## Active Contracts:

CBC Area	January 2023	February 2025
<b>Saint Francis (1) (Panhandle)</b>	Stage II (March 2022)	Stage III
<b>2INgage (2) (Big Country/Texoma)</b>	Stage II (June 2020)	Stage III
<b>Our Community Our Kids (3W) (Metroplex West)</b>	Stage II in southern 7 counties (March 2020)	Stage II in Cooke, Denton, Wise Stage III in southern 7 counties
<b>EMPOWER (3E) (Metroplex East)</b>	Procurement	Stage II
<b>4Kids4Families (4) (Piney Woods)</b>	Procurement	Stage II
<b>Texas Family Care Network (5) (Deep East)</b>	Procurement	Stage II
<b>Belong (8B) (South Central/Hill Country)</b>	Stage II (October 2022)	Stage III

## Pending Contracts:

CBC Area	January 2023	February 2025
<b>Region 8A (Bexar County)</b>	Pre-Procurement Planning	Procurement
<b>Region 6A (Harris County)</b>	Pre-Procurement Planning	Procurement
<b>Region 6B (Montgomery/Gulf Coast)</b>	Pre-Procurement Planning	Procurement

## No Bidders Received:

CBC Area	Procurement Date
<b>Region 9 (Permian/Concho)</b>	March 2022
<b>Region 10 (El Paso)</b>	February 2024



# CBC Performance Measures

<b>Safety</b>	For children not to experience abuse, neglect, or exploitation while in foster care.
<b>Stability</b>	To minimize the number of placement moves in foster care.
<b>Home Settings</b>	For children to live in home settings.
<b>Proximity</b>	For children to live within 50 miles of their home.
<b>Sibling Groups</b>	For sibling groups to be placed together.
<b>Preparation for Adult Living</b>	For youth who will age out of care to be prepared for adult living.
<b>Kinship</b>	For children to be placed with kin.
<b>Texas ID / DL</b>	Youth 16 and older access to a State ID / Driver's License
<b>Permanency/Reunification</b>	Reduce children's time in care.
<b>Re-Intervention</b>	Reduce future CPS intervention for children who exit care.





**TEXAS**  
Department of Family  
and Protective Services

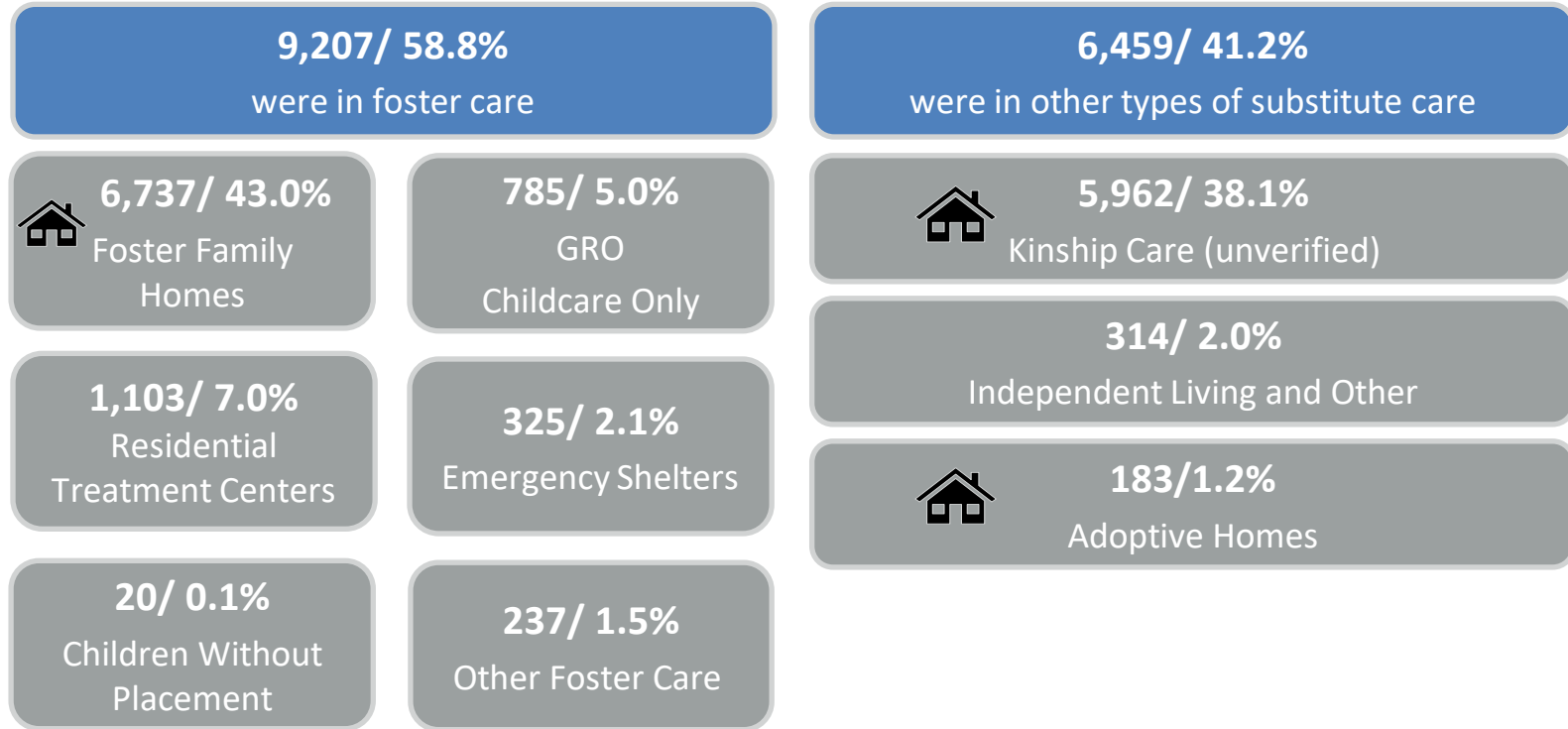
# Children Without Placement (CWOP)

---



# Placement Data

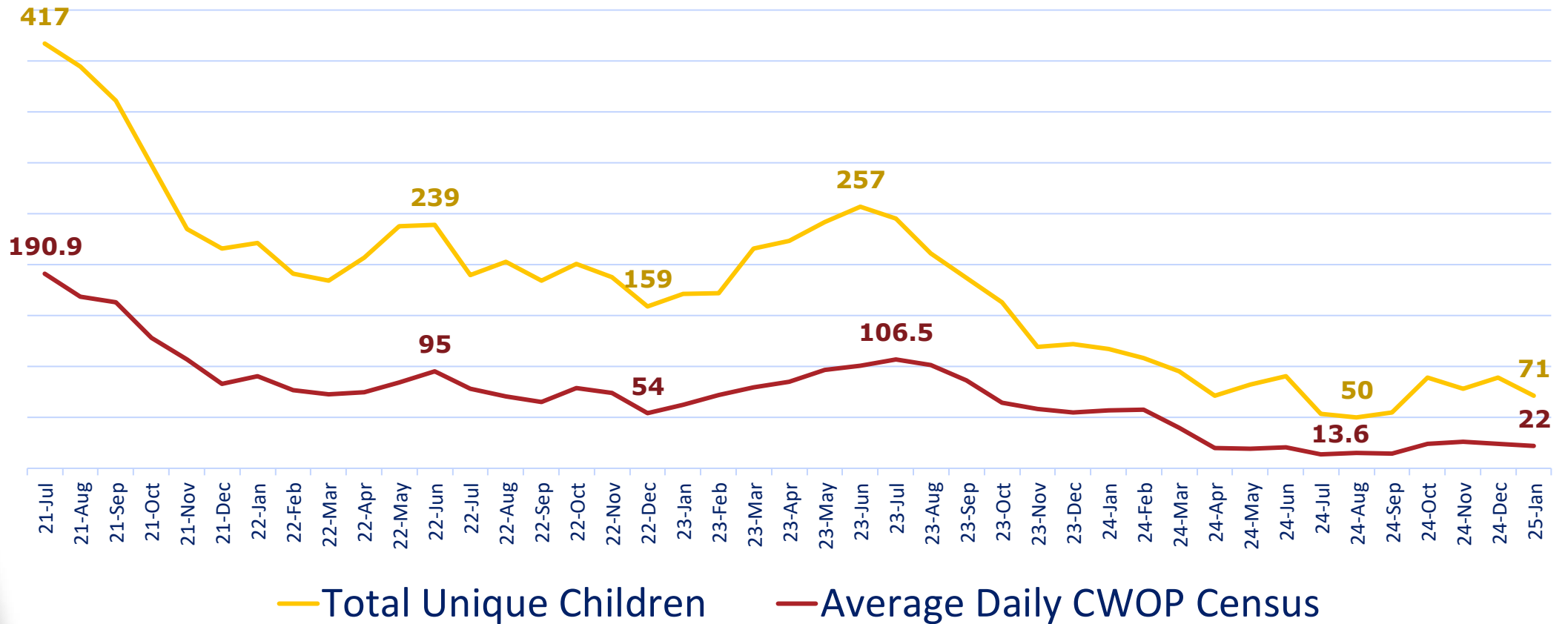
Most children in DFPS care reside in family-like home settings. Of the 15,666 children in care (ages 0-17) at the end of December 2024, 12,882 (82.2%) resided in a family-like home setting:



 =  
Family-Like  
Setting

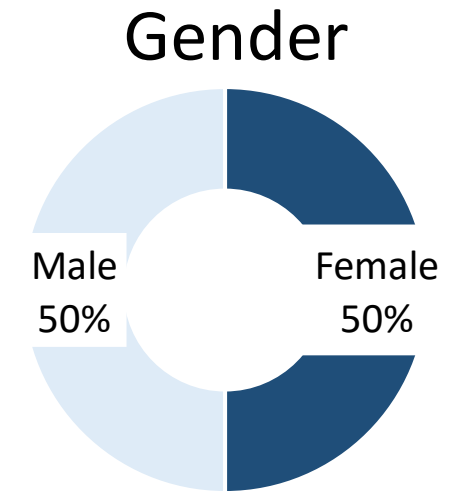
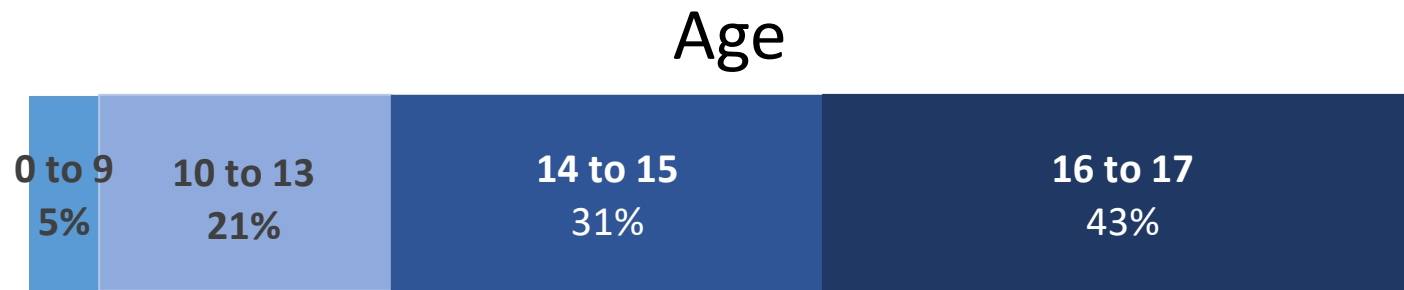


# Children Without Placement (CWOP)



# Children Without Placement

Children Without Placement  
FY 2024  
N=561 Children



**39%**

of all children who had a CWOP event in the timeframe had been in conservatorship for less than one year

**42%**

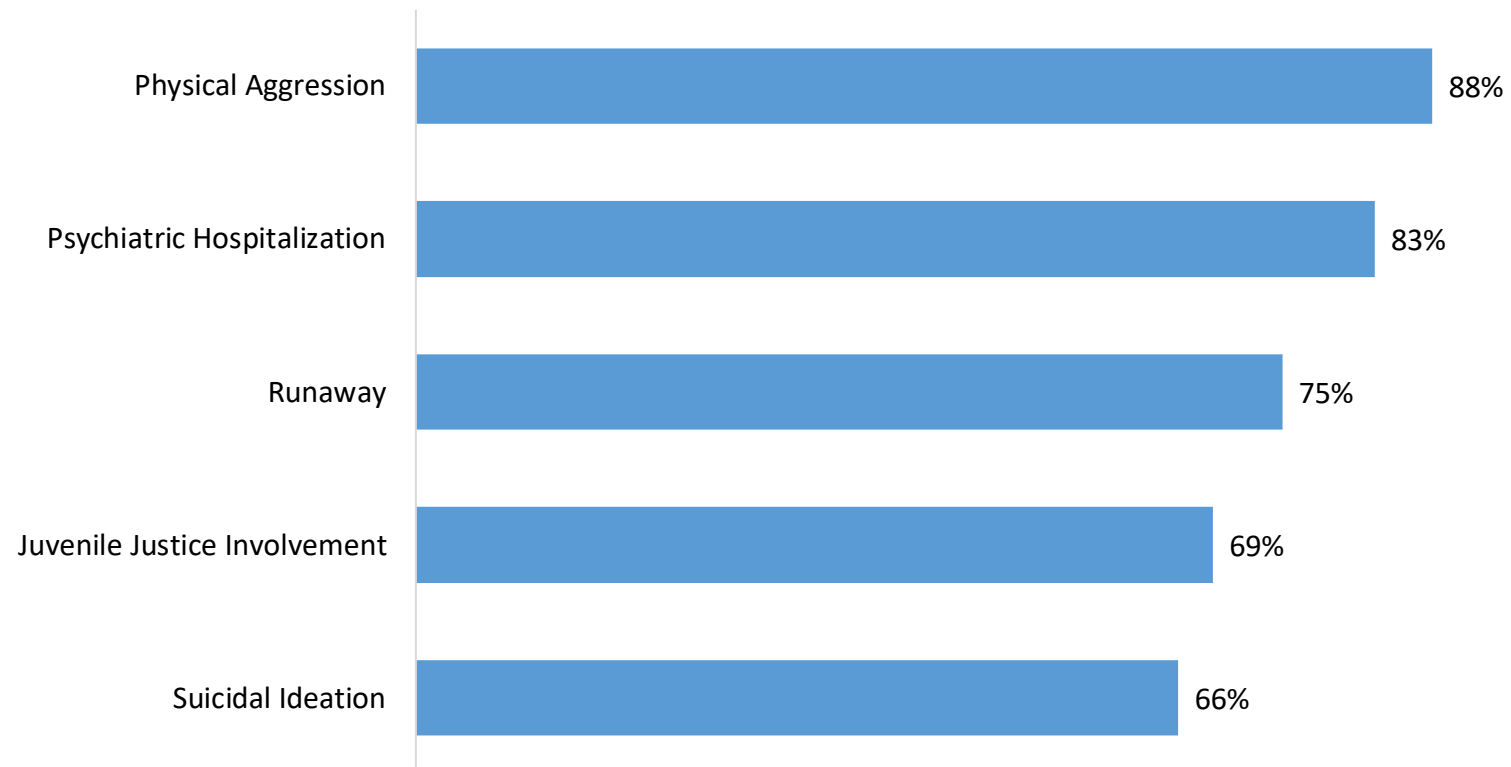
of all children who had a CWOP event in the timeframe were removed due to Refusal to Accept Parental Responsibility



# Children Without Placement

Top 5 Child Characteristics/Needs  
FY 2024  
N=1,119 Events

Children without placement have complex needs



# Children Without Placement Interventions

## System Efforts

### Strategic System Wide Efforts

DFPS centralized functions essential to finding placement solutions, surveyed providers to understand limits to capacity expansion, developed a community resource guide to help families in need of behavioral health support, and received funding to expand monitoring to more youth in Texas.

#### Individual Child Intensive Focus

- Conducts an intensive daily meeting that fosters accountability and commitment among all participants to ensure the safety and well-being of youth.
- Utilizes child specific programs to identify and address mental and behavioral health.
  - Intensive Psychiatric Stabilization Programs
  - Partnering youth with mentors
  - Individualized Therapies

#### Interagency Collaboration

- Convenes representatives from relevant state agencies and partners to use collective resources, knowledge, and expertise to address gaps in services.
- Resulting in a reduced number of youth in unlicensed placements; enhanced safety, stability, and well-being of affected children; and improved collaboration and communication among state and partnering agencies.

#### Dedicated Staffing and Facility

- In April 2024, DFPS began using Ferne, an unused RTC, as a CWOP location for boys ages 13-17.
- The dedicated staff develop trust with the youth and help to prepare them to successfully move to placement by:
  - establishing a pattern of positive behavior and
  - encouraging youth who previously rejected placement be active in identifying and expressing their placement priorities.





# Children Without Placement

## Youth Who Experienced CWOP Between March 9 – August 31, 2024

The child protection system alone cannot meet the complex needs of a small subset of youth

284 youth experienced 2+ consecutive nights of child watch

We identify placements for most youth with complex needs

43% experienced a subsequent child watch episode after that initial episode

Placements are difficult to maintain due to behavioral health needs

On average, youth experienced 3.2 subsequent child watch episodes





**TEXAS**  
Department of Family  
and Protective Services

# Texas Child-Centered Care (T3C)

---

# Texas Child-Centered Care

Texas Child-Centered Care (T3C), also formerly known as Rate Modernization, represents a ***complete*** transformation of the foster care system.

T3C replaces the 40-year-old rate structure with the following:

- Foster Care placements informed by an individual assessment.
- Clearly defined service packages designed to meet the individual needs of children in care.
- Rate methodology that aligns the cost of care to quality foster care services.
- Continuous quality assurance and improvement structure.



# The Path to T3C

## 86<sup>th</sup> Regular Session (2019)

- General Appropriations Act (GAA), Special Provision 32 required HHSC, in consultation with DFPS, to evaluate the existing foster care rate methodology.

## 87<sup>th</sup> Regular Session (2021)

- The GAA, Special Provision 26, directed DFPS, with the assistance of HHSC, to develop an alternative reimbursement methodology for foster care and CBC rates, including aligning rates to clearly defined program models.

## 88<sup>th</sup> Regular Session (2023)

- The GAA included funding directed to the implementation of and new rates paid under the T3C System.

## January 2025

- Providers transition to T3C begin serving children.

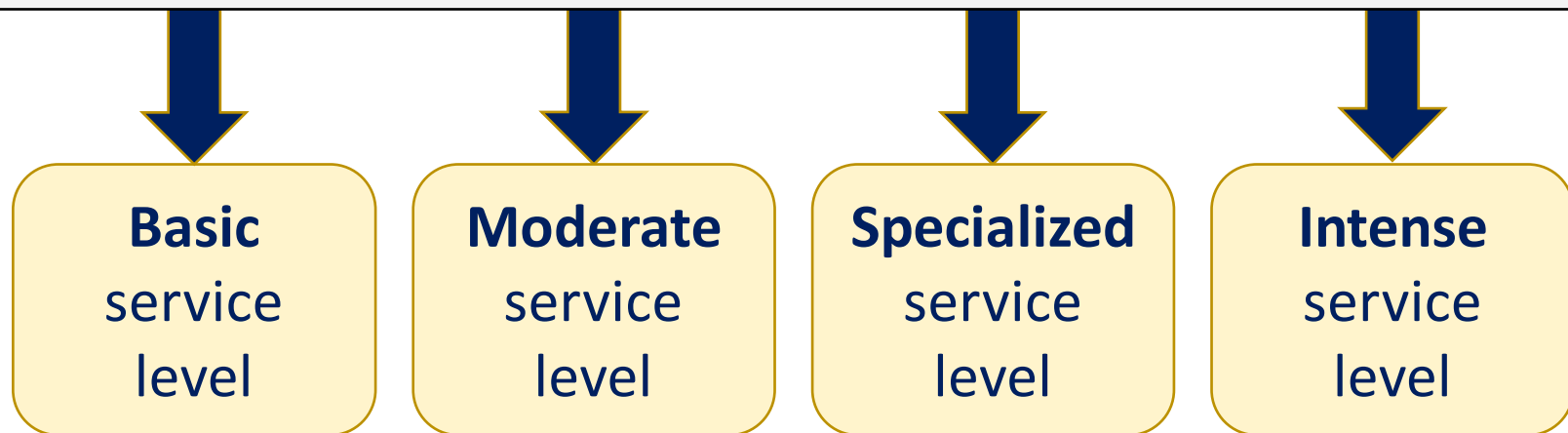
## September 2027

- All providers must be transitioned to T3C.



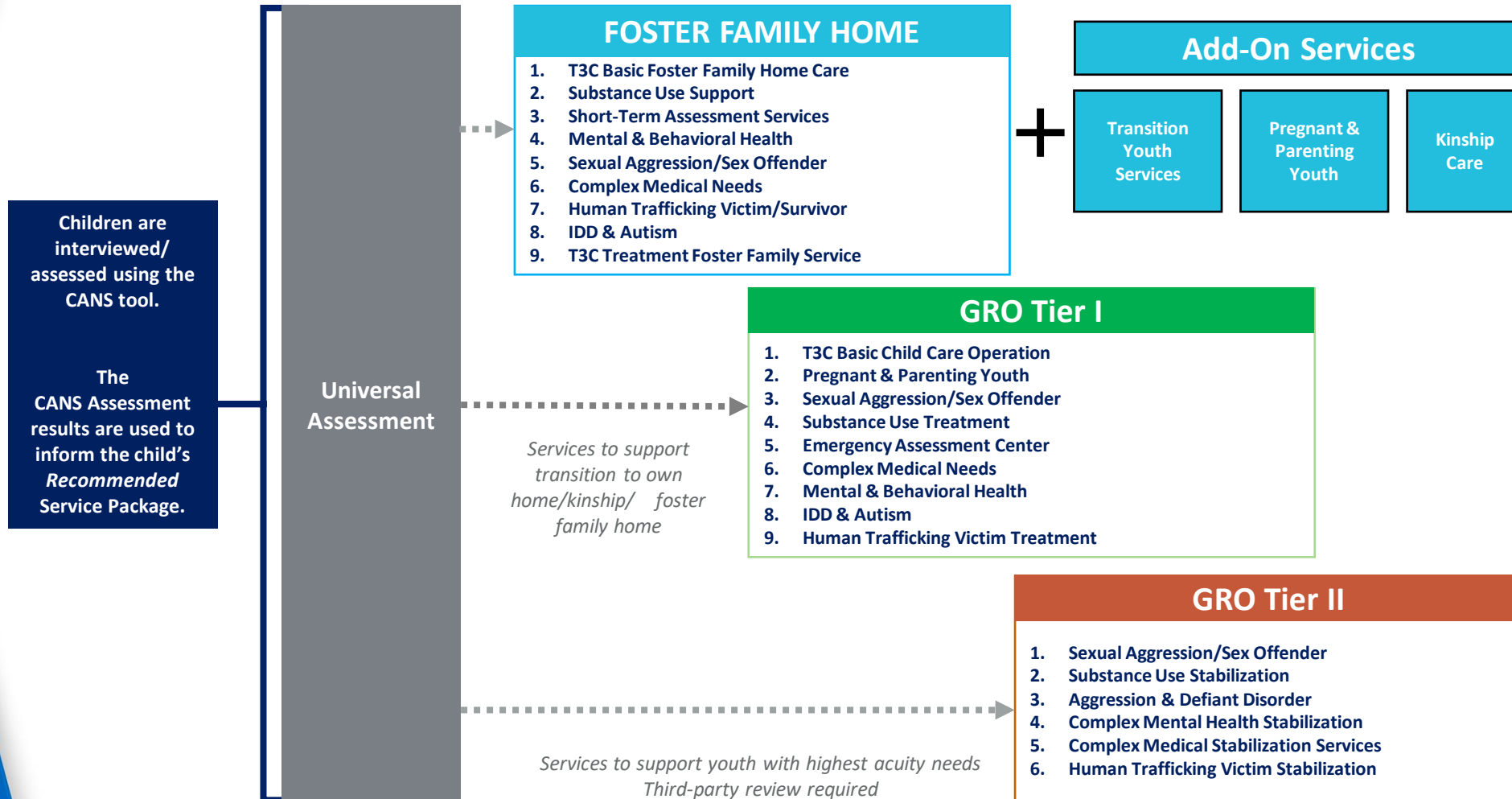
# Foster Care Service Delivery: Current System

Children are assigned one of four service levels based on a review of documentation, largely focused on behaviors, and are placed accordingly.





# Foster Care Service Delivery: Texas Child Centered Care (T3C)



# T3C Implementation Update

- DFPS established and went-live with the provider credentialing process in December 2024.
- Credentialing allows providers to apply and, if approved, deliver the new T3C service packages.
- As of February 7, 2025:
  - 59 providers have registered and have applied or are in the process of applying to become credentialed.
  - 32 provider applications are under review.
  - 9 providers have been awarded their Inactive Credential(s).
- Collectively these 9 providers represent about 11% of all active foster care placements at the end of the December 2024.





**TEXAS**  
Department of Family  
and Protective Services

# Thank you!

---

Contact DFPS Government Relations at [govrel@dfps.texas.gov](mailto:govrel@dfps.texas.gov).