



# **DFPS Rider 15 Report for Community-Based Care**

## **Performance Measures and Analysis**

---

March 2025

# Table of Contents

- Introduction ..... 1
- Background ..... 1
  - Performance Populations ..... 2
    - Considerations for Interpretation of Performance ..... 2
    - Direct Impact of Transition ..... 3
    - Challenges Posed by Systemic Factors ..... 4
- State of the Community-Based Care System ..... 6
  - Implementation Status ..... 6
  - Current Trends and Impact to Legacy and Community-Based Care Systems ..... 7
    - Foster Care Performance Measures (Stage I Objective – Section B)..... 12
    - Conservatorship Performance Measures (Stage II Objective – Section C)..... 17
- Recommendations ..... 31
  - Placement and Service Capacity Shortages ..... 31
  - Workforce Challenges ..... 31
  - Transition Process ..... 31
- Appendix A: Current Community-Based Care Community Areas..... 33

## Introduction

As required by the General Appropriations Act, 88<sup>th</sup> Texas Legislature, Department of Family and Protective Services (DFPS) Rider 15, the agency shall, on March 31st and September 30th of each year of the biennium, "report selected performance measures identified by the Legislative Budget Board (LBB) that will allow for comparative analysis between the Legacy foster care and the Community-Based Care (CBC) systems." The report "shall contain the most recent data for the selected comparative performance measures, an analysis of the data that identifies trends and related impact occurring in the Community-Based Care system, identification and analysis of factors negatively impacting any outcomes, recommendations to address problems identified from the data, and any other information necessary to determine the status of the Community-Based Care system." The Office of Community-Based Care Transition (OCBCT) collaborates with DFPS to complete this report.

Contained in this report is the status of implementation for CBC in Texas, as well as the current performance of the legacy system and the SSCC providers and other relevant information to inform the status of the CBC system. A more detailed update on the status of implementation can be found in the [Quarterly Report on Implementation Status](#).

## Background

CBC changes how DFPS procures, contracts, and pays for foster care services. Under a performance-based contract, a single contractor provides services to children and families within a designated community area. In Stage I, the Single Source Continuum Contractor (SSCC) provider is responsible for ensuring the full continuum of paid foster care placements and other services for children in the state's legal conservatorship. SSCC providers also support adoption recruitment, matching, and home studies. In Stage II, the SSCC provider expands services to include unverified relative or "kinship" placements and services to parents, and the SSCC provider has sole responsibility for the legal case management function. In Stage III, the SSCC provider continues the provision of all Stage I and II services, and DFPS is statutorily authorized to provide SSCC providers with financial incentives or remedies for outcomes related to performance. The logic model, created when Community-Based Care was first proposed, outlines the goals and expected outcomes for CBC in Texas. The metrics analyzed in this report inform progress towards these goals and outcomes.

## Performance Populations

The format identified by the LBB for reporting data supports comparative analysis of performance trends for the state, non-CBC communities (also known as legacy), and individual SSCC providers.

DFPS reports the performance of each population as follows:

- **Statewide** – Reports the performance of the entire state population of children.
- **Statewide Non-CBC** – Reports the aggregated performance of entire state population, excluding active SSCC areas.
- **CBC (SSCC)** – Reports the performance for each SSCC provider individually for children in conservatorship under the care of the SSCC provider.

For the FY25 Q1 submission of the Rider 15, the performance for the CBC population includes the SSCC providers below.

**Table 1**

*Names of Community Areas and their Respective SSCC Contractor and Division Names*

Catchment	Community Name	Contractor Legal Name	SSCC Division Name
1	Panhandle	Saint Francis Community Services, Inc	Saint Francis Community Services in Texas, Inc (Saint Francis)
2	Big Country and Texoma	Texas Family Initiative	2INgage
3E	Metroplex East	Texas Family Initiative	EMPOWER
3W	Metroplex West	ACH Child and Family Services and	Our Community Our Kids (OCOK)
4	Piney Woods	Arrow Child & Family Ministries	4Kids4Families
5	Deep East	Pressley Ridge	Texas Family Care Network
8B	South Central and Hill Country	SJRC Texas	Belong

Performance will be reported by the SSCC Division name.

## Considerations for Interpretation of Performance

As CBC progresses through staged implementation, the data can be used to help inform the following questions.

1. **Are there statewide changes which could also affect SSCC performance?** To answer this, examine trends over time in statewide performance. If there are trends upward or downward across the state, this may point to statewide factors influencing performance.

2. **How is the CBC system performing over time?** To answer this, compare SSCC performance to the performance of the “Non-CBC” population over time. If the SSCC designated community areas are improving more than the legacy catchment areas, the changes made to the foster care system under CBC may be more effective.
3. **How is a particular SSCC provider performing over time?** To answer this, compare individual SSCC provider performance across fiscal years. Improvement may take time as services are transitioned to each SSCC provider, and the SSCC provider works to build the network of services in the area.
4. **Are some SSCC providers performing better than others?** To answer this, compare SSCC provider performance to others. While each area has unique strengths and challenges, if a specific SSCC provider is improving outcomes compared to historical performance at a faster rate, the strategies implemented by the SSCC provider may be more effective.

Interpreting the performance of each SSCC provider and of the CBC model requires considering two important factors: the impact of the transition to CBC in each community and system factors outside of the direct control of each SSCC provider. These are detailed below.

## Direct Impact of Transition Time Needed to Make Change

An important factor in assessing the performance of individual SSCC providers is the time each has had to complete the transition. The first full fiscal year post-transition to Stage II, where the SSCC provider alone provides all services (as opposed to shared DFPS-SSCC service provision in the data) are summarized below.

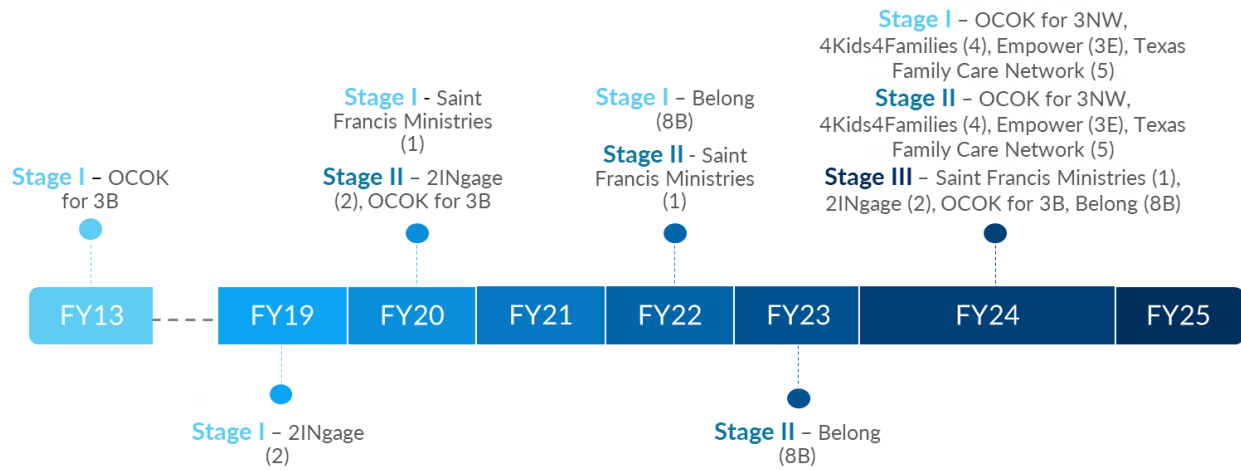
**Table 2**  
*First Fiscal Year of Individual Performance*

Catchment	Community	Stage II Start	First Fiscal Year of Non-Shared Performance
1	Panhandle (Saint Francis)	FY22 Q3	FY23
2	Big Country and Texoma (2INgage)	FY20 Q4	FY21
3E	Metroplex East (EMPOWER)	FY24 Q3	FY25
3W	Metroplex West (OCOK)	FY20 Q3	FY21
4	Piney Woods (4Kids4Families)	FY24 Q3	FY25
5	Deep East (TFCN)	FY24 Q3	FY25
8B	South Central and Hill Country (Belong)	FY23 Q1	FY23

For a full timeline of Stage I, Stage II, and Stage III transition for each of the current SSCC providers, see below.

**Figure 1**

*Timeline of Community-Based Care Transition for Current SSCC Providers*



SSCC providers who entered Stage II prior to fiscal year 2024 have had more time since their transition, and therefore, have had an opportunity to overcome issues that may have impacted them more immediately post-transition. SSCC providers who entered Stage II during fiscal year 2024 have had less time to resolve those issues, and therefore, their performance in fiscal year 2025 may still reflect challenges associated with the transition to CBC.

**Effects of Transition on Casework**

In order to produce quality outcomes for children and families, an SSCC provider needs a stable and well-trained workforce. This is one of the core priorities between Stage I and Stage II, as well as in the early period of Stage II. DFPS and OCBCT recognize that if there is difficulty attracting existing DFPS staff and a significant proportion of the workforce is new, this can cause some slow-down in case activity and documentation. Early performance on outcomes, such as permanency, may be impacted as new staff get up-to-speed on cases and familiar with court requirements.

**Challenges Posed by Systemic Factors**

**Change in Conservatorship Population**

The number of children in DFPS conservatorship started to decline as early as FY18, as the population dropped to 28,753 children on August 31<sup>st</sup>, 2021, from 32,797 children on August 31<sup>st</sup>, 2018. However, the population dropped steeply after this point, resulting in a total reduction of children in DFPS conservatorship by 15,500 children on August 31<sup>st</sup>, 2024<sup>1</sup>.

<sup>1</sup> Data Source: DFPS Databook CPS 2.4 Children In Legal Responsibility on August 31 by Legal Status and Average Days in Care FY2015-2024, Report Data as of 1/30/25, Report Retrieved 3/4/25

In the context of the performance data, this consideration can be especially informative. The population of children in conservatorship today is nearly half what it was in 2018, which makes comparisons to prior fiscal years complex. Compared to prior fiscal years, small numeric changes to performance have a bigger impact on percent change. This consideration is even more relevant to measures with particularly small denominators, such as the Percent of Youth Age 16 or Older who have a Driver's License or State Identification Card and Percent of Youth who turned 18 and have completed required PAL Life Skills Training.

This reduction in the population size is largely attributable to the reduction in removals each fiscal year: removals fell by 42.5% for FY24 when compared to FY21<sup>2</sup>. With fewer children removed, there are fewer children in care at 60 days and fewer children in conservatorship altogether compared to prior fiscal years. Performance metrics that focus on new removals, such as placements in kinship at 60 days and time to permanency, may be influenced by a reduction in new removals.

The reduction in removals was not consistent across populations, both in geography and in child characteristics. Some catchment areas have had a greater change in removals than others. Therefore, while all catchment areas saw their population sizes decline, one cannot assume that performance would always change in the same way for all parts of the state. For instance, analysis has shown that there was a greater reduction in removals for older youth than younger children. This means that the population in conservatorship today may have different needs and characteristics than the population in conservatorship in previous fiscal years.

### **Foster Care Capacity**

This shift in the population of children in conservatorship has resulted in a need for the provider network to evolve to better meet the changing needs of children and youth. When a child is removed from their home, the Department and SSCs need to place the child in a substitute care placement. Children should be placed with kin when possible, and, if an appropriate kinship placement is not available, in a licensed foster care placement, such as a foster home. Yet, kinship availability and foster care capacity is not distributed consistently with the population of children in care. Due to cultural, geographic, and systemic factors, some regions have higher availability of kinship than other areas. In rural areas, finding licensed placement near children's home communities can be a challenge due to smaller populations. Even when placement options are available, they must be an appropriate match for the child's specific needs. As needs of children in conservatorship have changed, finding placements that are both close to home and suited to a child's specific needs have become increasingly challenging.

---

<sup>2</sup> Data Source: DFPS Databook CPS 2.1 Removals - by Region with Child Demographics FY2015-2024, Report Data as of 1/30/25, Report Retrieved 3/4/25.

Over the last few years, the child protection system experienced a decrease in available licensed placements. For example, since September 2023, 37 residential providers closed which reduced the total placement capacity by 836 beds<sup>3</sup>. These reductions in capacity may impact the ability of an SSCC provider to place children in their home communities. These foster care capacity challenges affect several performance measures, namely placing siblings together in paid foster care, the number of paid foster care placements per child, the percentage of children placed in paid foster care placements within 50 miles of removal location, the percentage of placement days in a home setting, and timely reunification.

## State of the Community-Based Care System

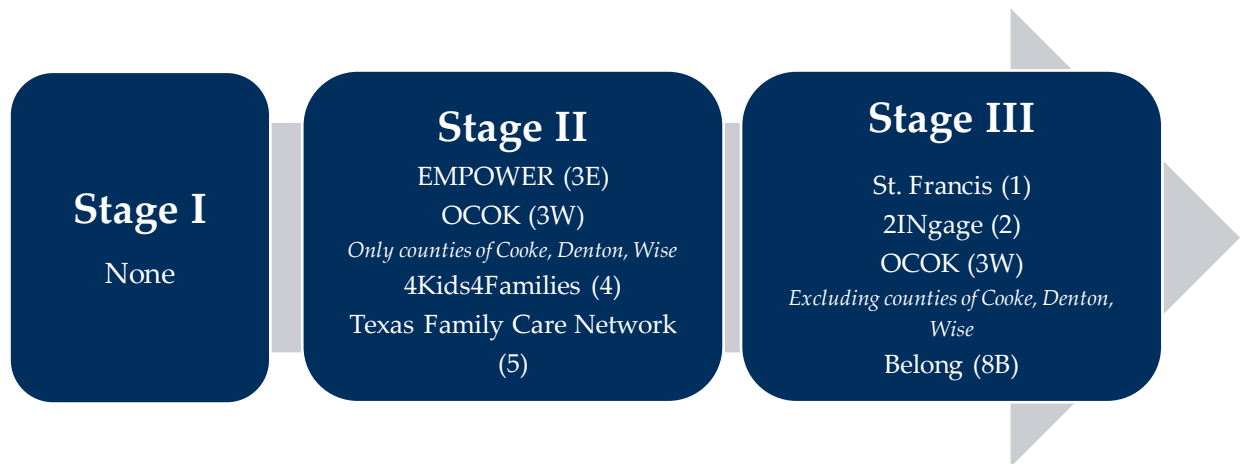
Community-Based Care is expanding to additional communities as they become ready to manage and provide foster care. In each area, a single organization contracts with DFPS to coordinate a seamless system of services for children under DFPS conservatorship.

### Implementation Status

DFPS and OCBCT are working toward full implementation of CBC statewide. See Appendix A for a map of the current status.

Figure 2

*Community-Based Implementation Summary for Current SSCC Providers*



Currently, of the 17,126 children in DFPS conservatorship, 49.4<sup>4</sup> percent are in SSCC community areas on January 31<sup>st</sup>, 2025. As illustrated above, of the seven CBC catchments, four SSCC

<sup>3</sup> PCS\_12 “Active Residential Child Care (RCC) Contracts”, PCS\_13 “SSCC Placement Network List”, PCS\_18 “Closed Residential Child Care (RCC) Contracts in Last Five Years” Reports Retrieved 3/17/25.

<sup>4</sup> Data Source: DFPS Data Warehouse, CPS pp\_05; Report Data as of 1/31/25, Report Retrieved 3/7/25



providers are in Stage III, and three SSCC providers are in Stage II. There are no catchments in Stage I as of this report. DFPS posted a Request for Application (RFA) for regions 6A, 6B, 8A, and 10 in February 2024 and is currently in the contract award phase for regions 6A, 6B, and 8A. DFPS has included a request to expand CBC into regions 7A, 7B, 11A, and 11B in the agency's Legislative Appropriations Request. See Appendix A for a map of which parts of the state correspond to which catchment areas.

## **Current Trends and Impact to Legacy and Community-Based Care Systems**

DFPS and OCBCT assess contract performance measures (referred to as "Section B" and "Section C" of the excel version of the Rider 15) quarterly as part of formal contract monitoring and a Continuous Quality Improvement (CQI) process. Through this process, DFPS, OCBCT, and each SSCC provider review performance measure results each quarter, along with other data used to identify potential trends and performance drivers. Performance drivers may include changes to the population of children, trends specific to those populations, placement utilization practices, and other data.

The goal for any performance measure is that they measure to the best degree possible the intended outcome for which it is designed. When it is discovered that there is a level of nuance that was not previously considered for the measure, the methodology is updated to ensure better alignment. As such, the Safety in Paid Care measure will show different performance for Fiscal Year 2024 than reported in the Fiscal Year 2024 Quarter 3 Report, submitted September 30, 2024, and amended October 23, 2024.

The March 2025 Rider 15 Report and Data reflect an improvement in performance for the measure - % Children who do not Experience Abuse/Neglect, or Exploitation while in Foster Care. This is captured within the report as Single Source Continuum Contractor (SSCC) Contract Performance Measure 2.1, Section B.

The intent of the measure is to report victims of abuse and neglect for children placed in paid foster care placements that were made by the SSCC provider (Stage I). As such, the following exclusions now apply:

1. Where the child's placement ended before the SSCC provider started Stage I.
2. Where the investigation initiated before the SSCC provider started Stage I.
3. Where the investigation initiated on or after the SSCC provider started Stage I, but the placement was not under the SSCC provider's network at the time of the investigation initiation, due to the transition process during Stage I.

The exclusions indicate improved performance for Fiscal Year 2024 for the SSCC providers that recently transitioned to CBC:

- Metroplex East (3E) had 10 victims excluded, nine of which were included in the FY24 Q3 Rider 15 report,
- The added counties of Cooke, Denton, and Wise to Metroplex West (3W) had two victims excluded, both of which were included in the FY24 Q3 Rider 15 report,
- Piney Woods (4) had six victims excluded, all of which were included in the FY24 Q3 Rider 15 report, and
- South Central and Hill Country (8B) had two victims excluded, both of which were included in the FY24 Q3 Rider 15 report.

Deep East (5) did not have any victims that met the above exclusions. All victims are still reported under the Statewide performance.

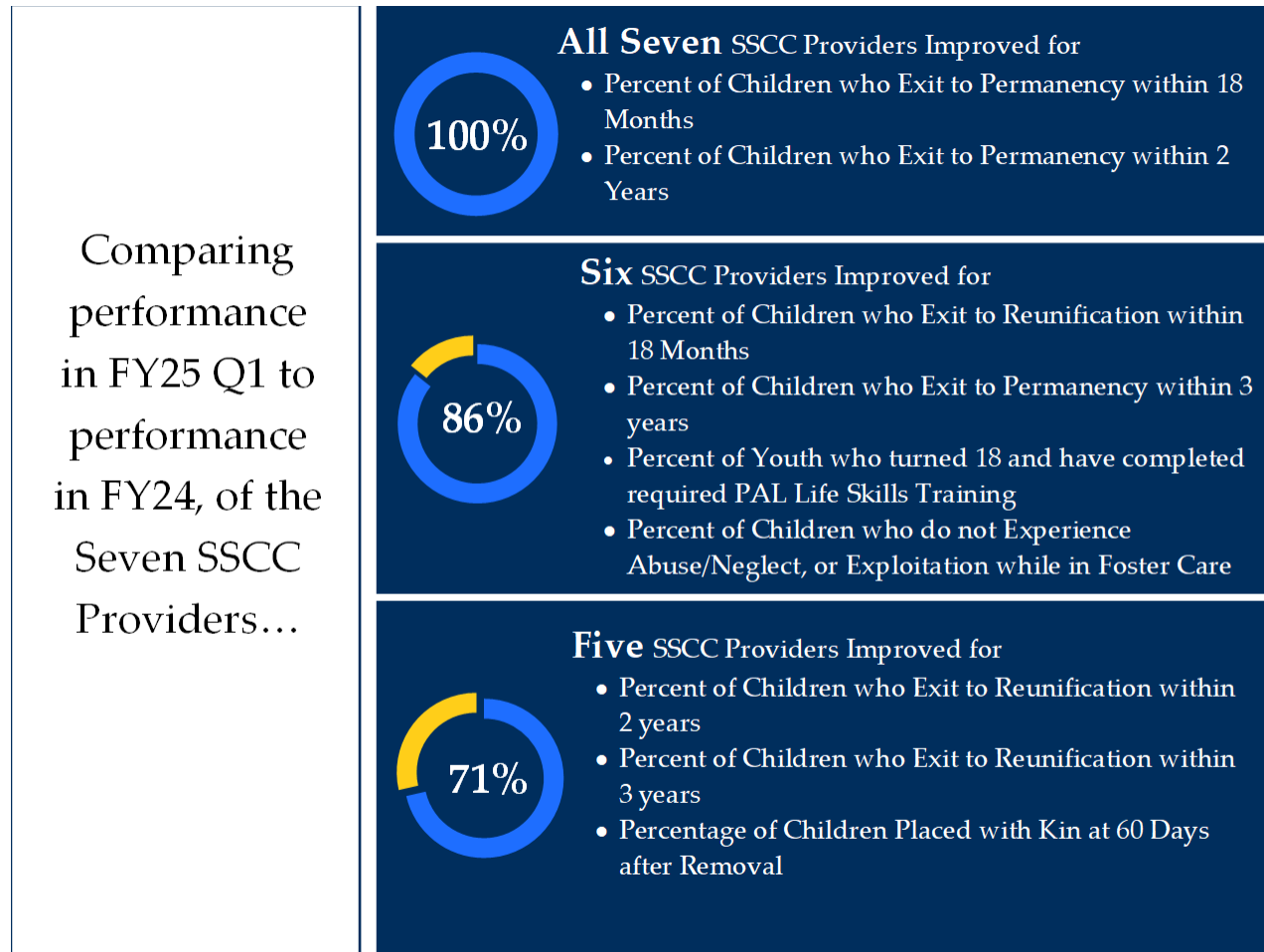
Below are high-level summaries of performance results for FY25 Q1, outlining the areas where the majority of SSCC providers are improving over recent fiscal year performance, as well as areas for which the majority of SSCC providers have not improved their performance. The summaries also refer to some of the identified performance drivers.

### **Upward Trends in Performance**

Overall, SSCC providers improved the timeliness with which children exit foster care to be reunified with their parent(s) or to another permanent living arrangement, such as adoption. The below graphic summarizes the performance measures in which current performance improved upon last year's performance per SSCC provider.

**Figure 3**

*Summary of Upward Trends in Performance for Current SSCC Providers<sup>5</sup>*



Potential drivers for these performance improvements could be related to the innovation and flexibility that the SSCC providers are able to incorporate in their provision of these services. SSCC providers have flexibility to hire in a way that recognizes and meets the unique needs to each community. Some SSCC providers use family specialists who are assigned to work with parents immediately upon removal, which may help those families achieve reunification more quickly. They also use family finders and connection specialists whose function is to identify potential relative and fictive kin options; not only do they relieve the workload of the primary caseworker to identify kinship placement options for children, but they also create connections with significant persons in the children’s lives, which is part of the legislative intent for CBC in Chapter 264 of the Texas Family Code.

<sup>5</sup> Of the six providers that improved performance for the Percent of Youth who turned 18 and have completed required PAL Life Skills Training, two maintained performances at 100%

Additionally, the SSCC providers can more quickly build a network of the purchased client service providers compared to DFPS, which can potentially increase rates of reunification, permanency, and PAL completion.

Examples of this innovation and flexibility include:

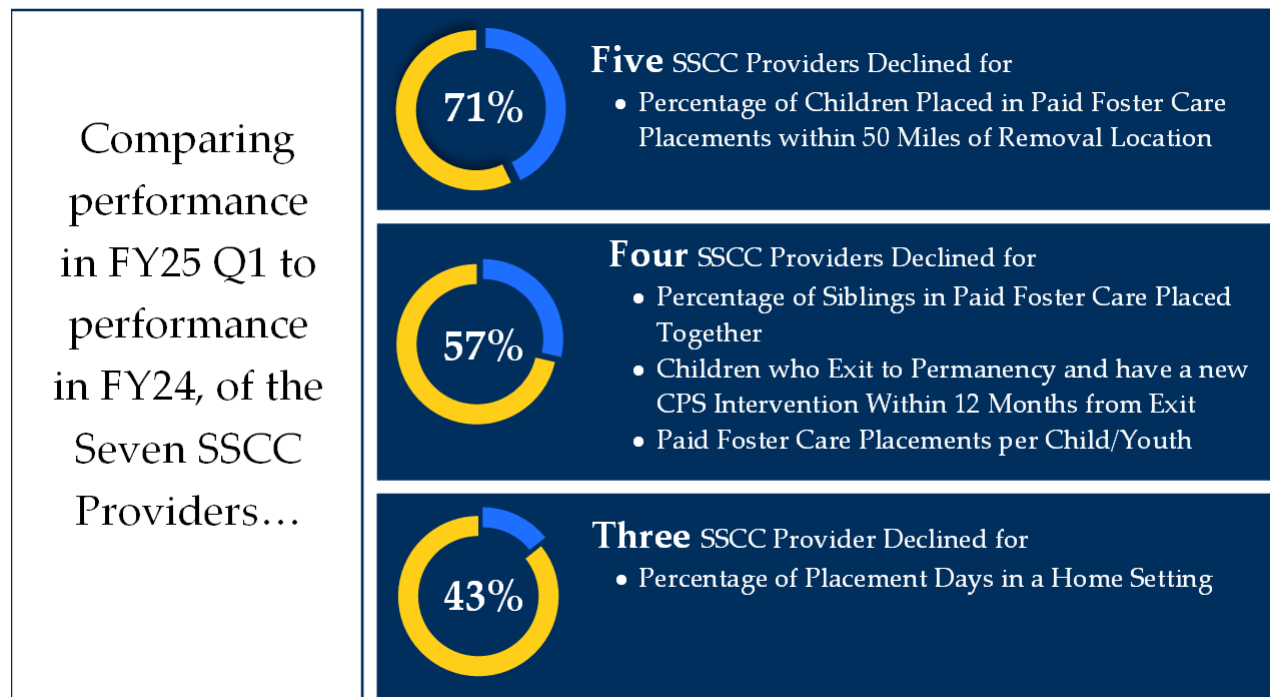
- Creating positions and program supports to meet the unique needs of the community,
- Using staff identified as family finders, and connection specialists
- Accessing grants and community resources for supporting parents and kinship families,
- Providing PAL in-house to have targeted, child-centric approaches to the program

### Downward Trends in Performance

The below graphic summarizes the performance measures in which current performance did not improve upon last year's performance per SSCC provider.

**Figure 4**

*Summary of Downward Trends in Performance for Current SSCC Providers*



Potential drivers of the downward trends observed above could be related to capacity and the geographic composition of the catchment area. Regarding capacity, the needs and characteristics of youth in state care have changed. This trend leads to the network and capacity statewide not thoroughly meeting the needs of the youth in care. Facility closures in multiple setting types also contributed to a loss of capacity statewide.

Varying and unique geographic composition statewide could be a driver for the

downward trend of placement in a home setting and within 50 miles of removal location. In rural regions it is common to experience increased travel time, especially for specific or unique needs or services. There are also less General Residential Operation (GRO) options and fewer foster homes in rural regions, further increasing the distance that a youth might have to travel to find a placement to meet their needs.

The CQI process enables DFPS and OCBCT to understand the significance of performance measure trends and assess the strategies each SSCC provider has in place to maintain or improve performance. Whenever DFPS and OCBCT identify performance concerns or compliance issues, DFPS will intervene as indicated in the contract progressive intervention process, which includes a range of required actions the SSCC provider will take to reverse the trend or address the area of non-compliance. The progressive intervention plan for the SSCC providers can be found in the [Annual CBC Implementation Plan](#), which is released at the end of each calendar year.

Performance measure data referenced below reflects performance through the first quarter of FY25, which is provisional and subject to change. Percentages may not sum to totals due to rounding.

## **Foster Care Performance Measures (Stage I Objective – Section B)<sup>6</sup>**

These measures are effective in Stage I, and all measures continue into Stage II and Stage III. The goal of Stage I is to create and sustain a network of paid foster care providers within the catchment area to ensure paid care placements provide safety and well-being, such as being placed as a sibling group or close to home.

---

<sup>6</sup> DFPS Rider Report March 2025 Data Attachment.

### Percentage of Children Safe in Paid Foster Care

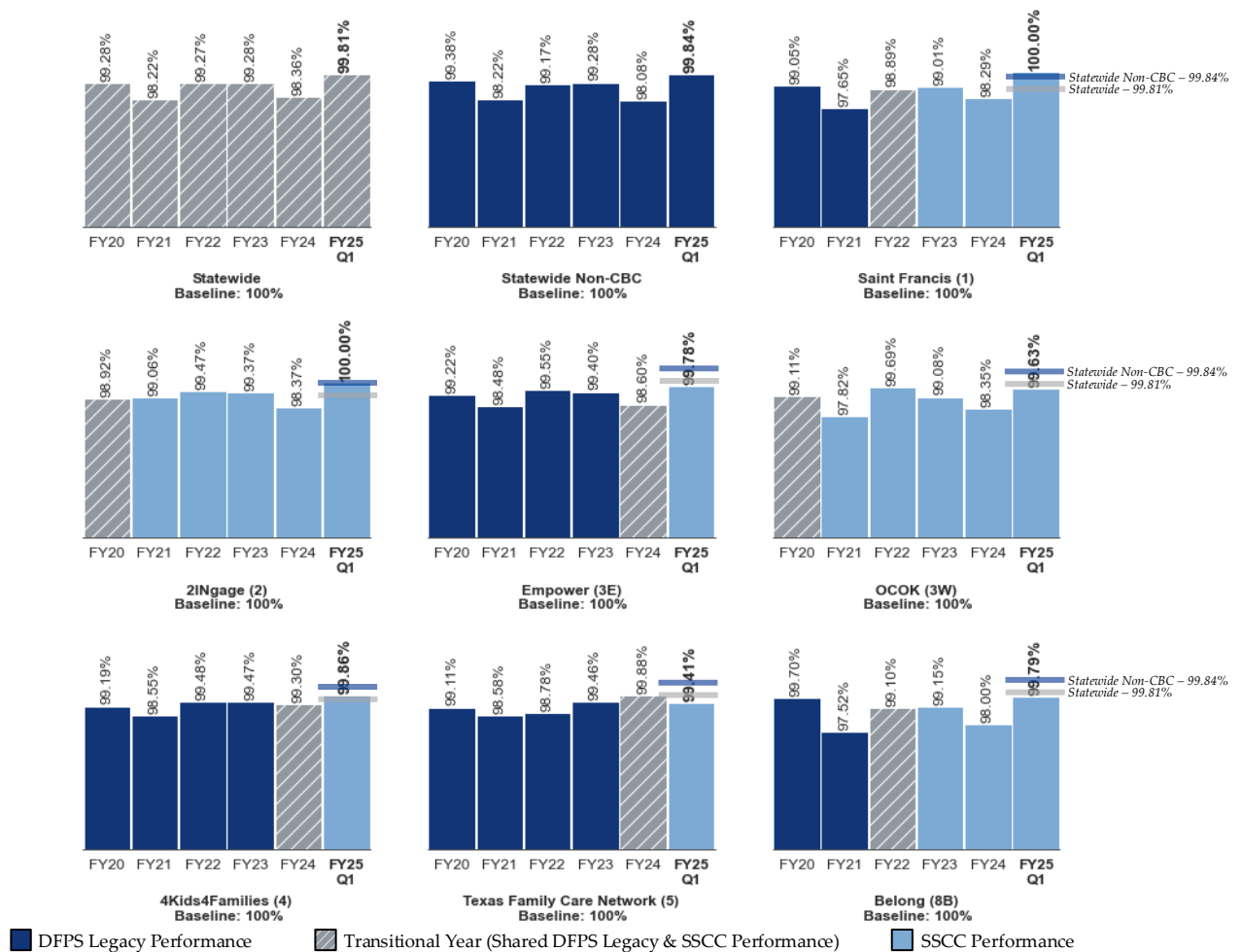
This performance measure is defined as the percentage of children who do not experience abuse, neglect, or exploitation while in paid foster care. All safety performance below 100% is an area to target for improvement.

Overall, performance improved for this measure:

- **Statewide:** The percentage of children safe in paid foster care increased by 1.45% in FY25 Q1 compared to FY24.
- **Statewide Non-CBC<sup>7</sup>:** The percentage of children safe in paid foster care increased by 1.76% in FY25 Q1 compared to FY24.
- **CBC:** Six SSCC providers show performance improvements in keeping children safe in paid foster care in FY25 Q1 compared to FY24. Two providers kept 100% of children safe in paid care.

**Figure 5**

*Children Safe in Paid Foster Care*



<sup>7</sup> Statewide Non-CBC excludes the active CBC Community Areas of 1, 2, 3E, 3W, 4, 5, and 8B.

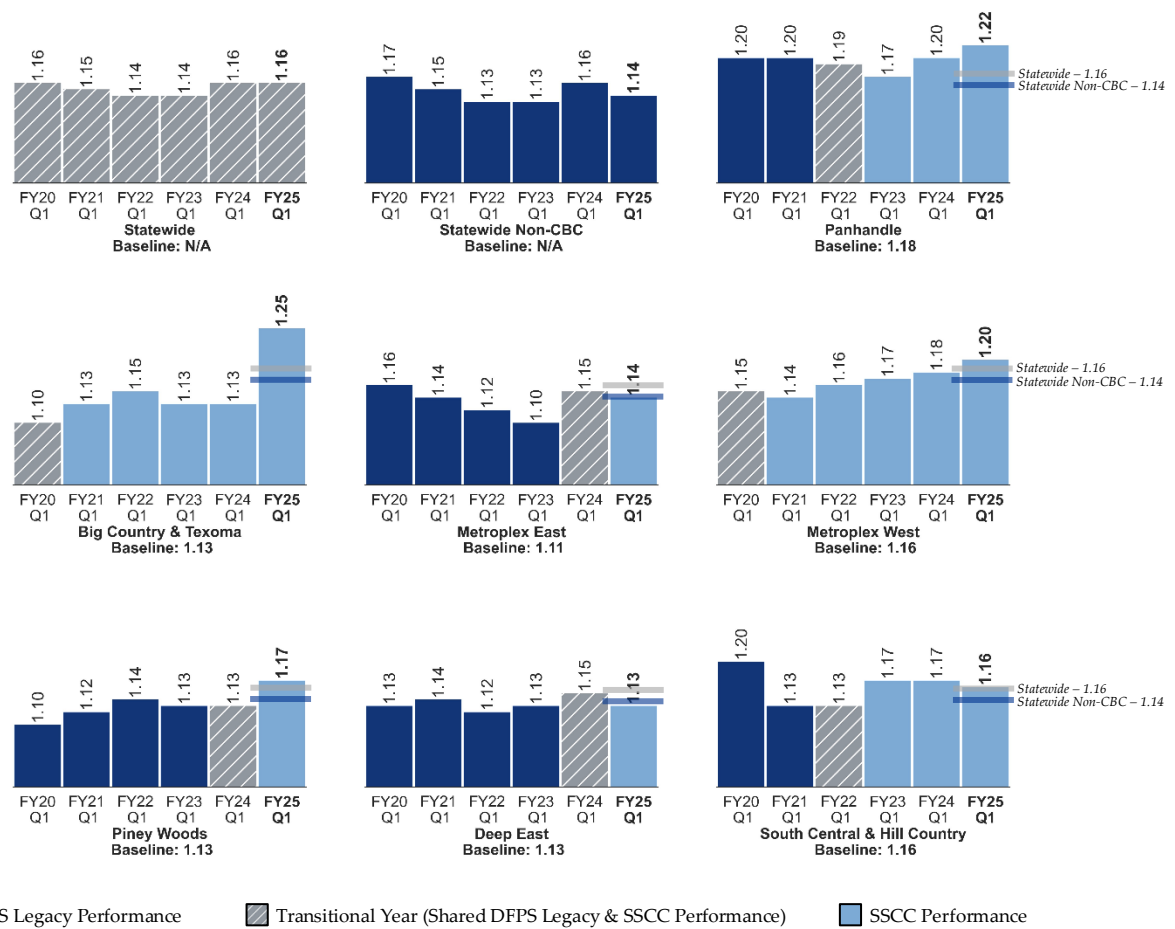
### Paid Foster Care Placements per Child/Youth<sup>8</sup>

This performance measure is defined as the number of SSCC foster care placements per child. This measure is cumulative throughout the fiscal year, and so like quarters are compared to each other.

Overall, performance was mixed for this measure:

- **Statewide:** Performance remained stable in FY25 Q1 compared to FY24 Q1.
- **Statewide Non-CBC:**<sup>9</sup> Performance improved in FY25 Q1 compared to FY24 Q1, decreasing from 1.16 to 1.14 paid foster care placements per child, indicating improved stability.
- **CBC:** Three SSCC providers show improved performance for this measure in FY25 Q1 compared to FY24 Q1.

**Figure 6**  
 Paid Foster Care Placements (Quarter 1 YTD Only)<sup>10</sup>



<sup>8</sup> Values noted are for Q1 of specified Fiscal Years.

<sup>9</sup> Statewide Non-CBC excludes the active CBC Community Areas of 1, 2, 3E, 3W, 4, 5, and 8B.

<sup>10</sup> DRIT 116975 Rider 15 Data for SSCC 2.2 Q1 History Only



### Percentage of Children Placed in Paid Foster Care Placements within 50 Miles of Removal Location

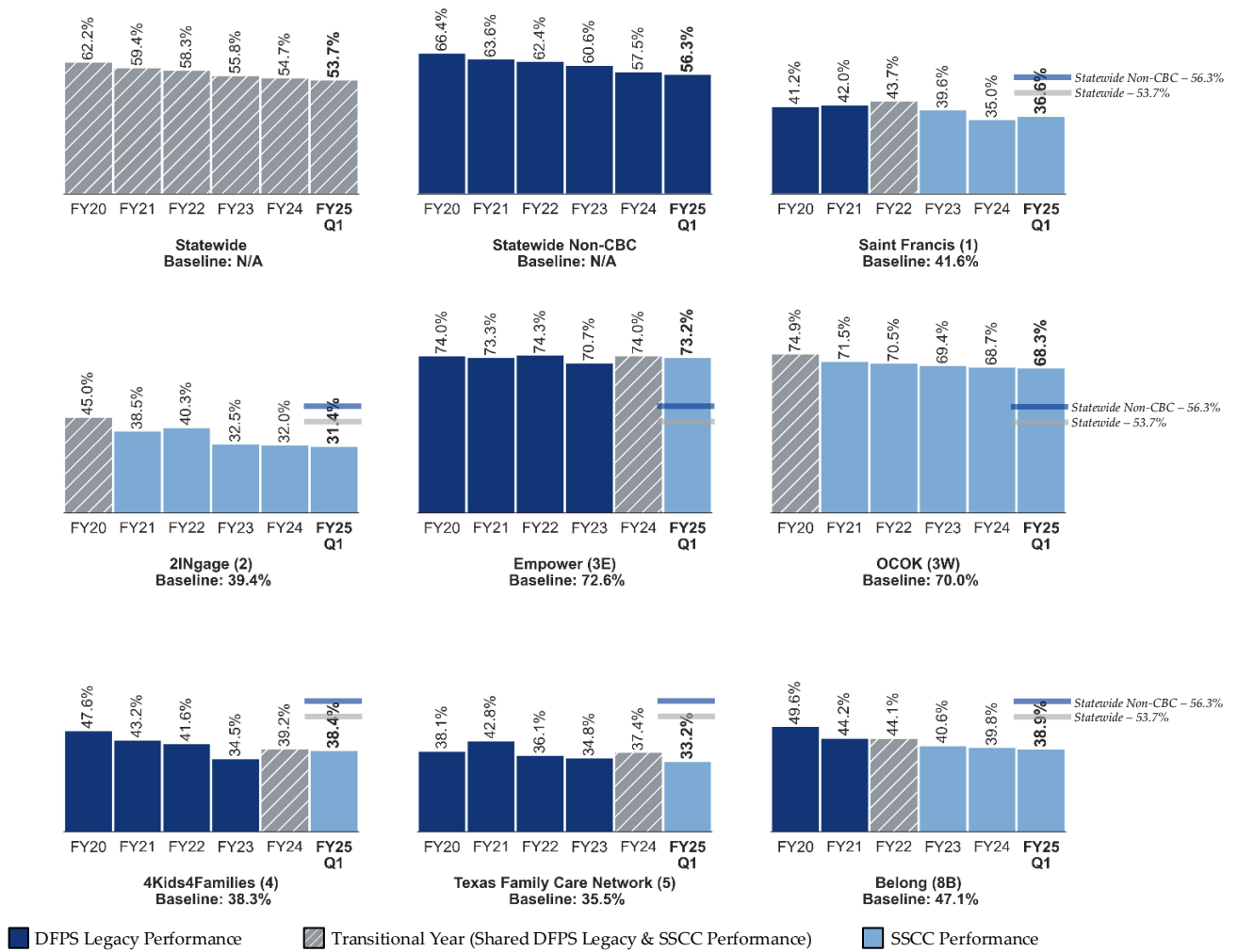
This performance measure is defined as the percentage of children/youth in paid foster care placements within 50 miles of their home.

Overall, performance declined for this measure:

- **Statewide:** The percentage of children placed close to home decreased by 1.0% in FY25 Q1 compared to FY24.
- **Statewide Non-CBC:**<sup>11</sup> The percentage of children placed close to home decreased by 1.2% in FY25 Q1 compared to FY24.
- **CBC:** One SSCC provider shows performance improvements in placing children close to home in FY25 Q1 compared to FY24.

Figure 7

Children in Paid Foster Care Placements within 50 Miles of Removal Location



<sup>11</sup> Statewide Non-CBC excludes the active CBC Community Areas of 1, 2, 3E, 3W, 4, 5, and 8B.

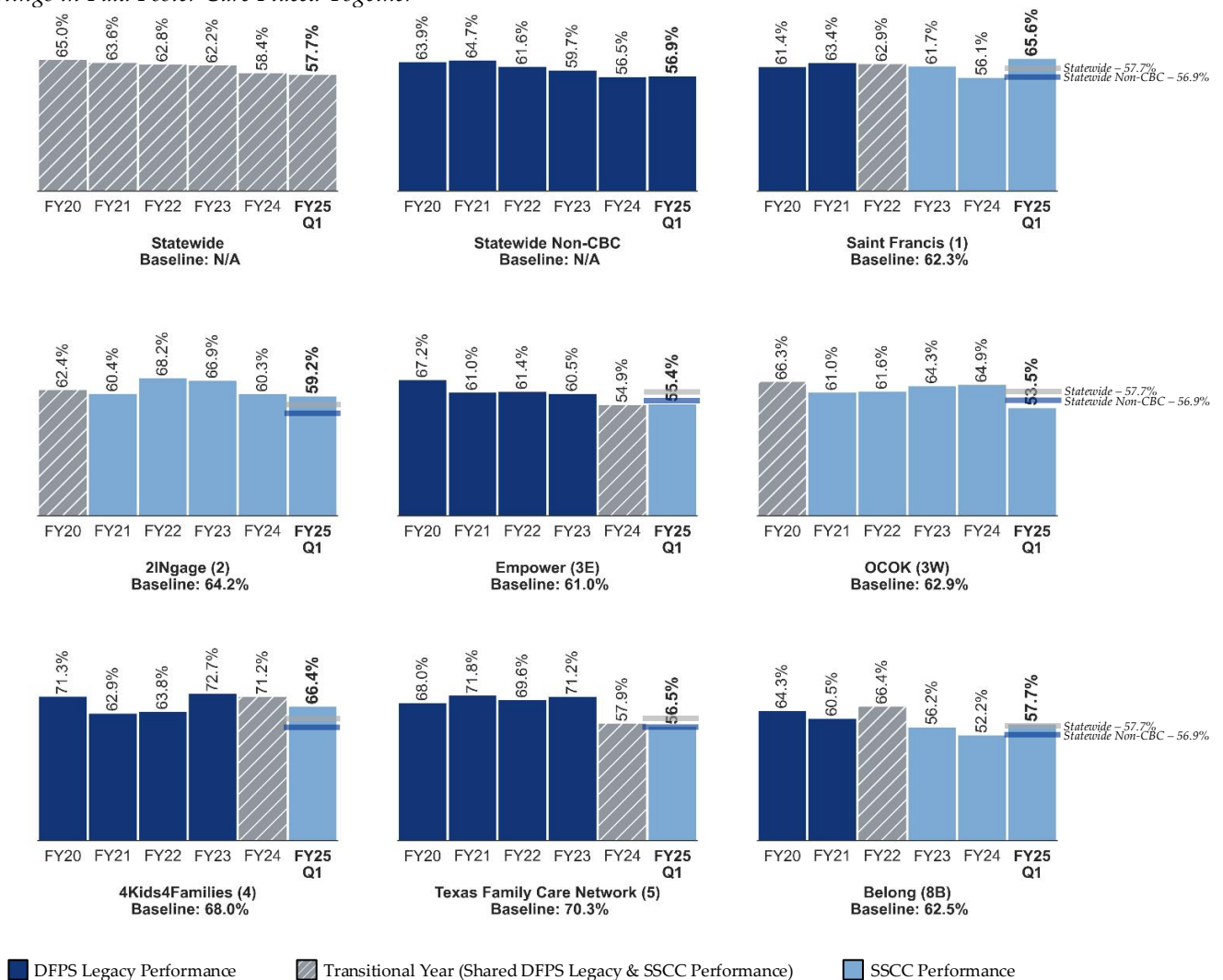
### Percentage of Siblings in Paid Foster Care Placed Together

This performance measure is defined as the percentage of sibling groups all placed together in paid foster care on the last day of the reporting period.

Overall, performance was mixed for this measure:

- **Statewide:** The percentage of siblings in paid foster care placed together decreased by 0.7% in FY25 Q1 compared to FY24.
- **Statewide Non-CBC:**<sup>12</sup> The percentage of siblings in paid foster care placed together increased by 0.4% in FY25 Q1 compared to FY24.
- **CBC:** Three SSCC providers show performance improvements in placing siblings together in paid foster care in FY25 Q1 compared to FY24.

**Figure 8**  
*Siblings in Paid Foster Care Placed Together*



<sup>12</sup> Statewide Non-CBC excludes the active CBC Community Areas of 1, 2, 3E, 3W, 4, 5, and 8B.

## Conservatorship Performance Measures (Stage II Objective – Section C)<sup>13</sup>

The goal of Stage II is to improve exits to permanency for children in DFPS conservatorship, including both the number of children exiting to permanency and the speed at which they exit. These measures and objectives continue into Stage III.

Please note for the measures related to exits to Permanency and to Reunification, the cohorts used are entry cohorts, meaning they represent children who are removed in the Fiscal Year for which performance is reported.

For each removal cohort, each child needs an equal opportunity to reach the desired outcome. For example, for each child removed in FY20, there needs to be at least one full year after removal before data is reported on who exited to Permanency or Reunification within 12 months of removal. Thus, the data cannot be reported until after August 31<sup>st</sup>, 2021. For a full list of when to expect performance for each time period and fiscal year, see below.

**Table 3**  
*Time Parameters for Entry Cohort Reporting*

Parameters for Entry Cohort Outcome Reporting	FY20	FY21	FY22	FY23
<b>Last Possible Day of Removal</b>	8/31/2020	8/31/2021	8/31/2022	8/31/2023
<b>12 Months after Last Possible Day of Removal</b>	8/31/2021	8/31/2022	8/31/2023	8/31/2024
<b>First Quarter to Report on 1 Year Outcome</b>	FY22 Q1	FY23 Q1	FY24 Q1	FY25 Q1
<b>First Quarter to Report on 18 Months Outcome</b>	FY22 Q3	FY23 Q3	FY24 Q3	FY25 Q3
<b>First Quarter to Report on 2 Years Outcome</b>	FY23 Q1	FY24 Q1	FY25 Q1	FY26 Q1
<b>First Quarter to Report on 3 Years Outcome</b>	FY24 Q1	FY25 Q1	FY26 Q1	FY27 Q1

<sup>13</sup> DFPS Rider Report March 2025 Data Attachment.

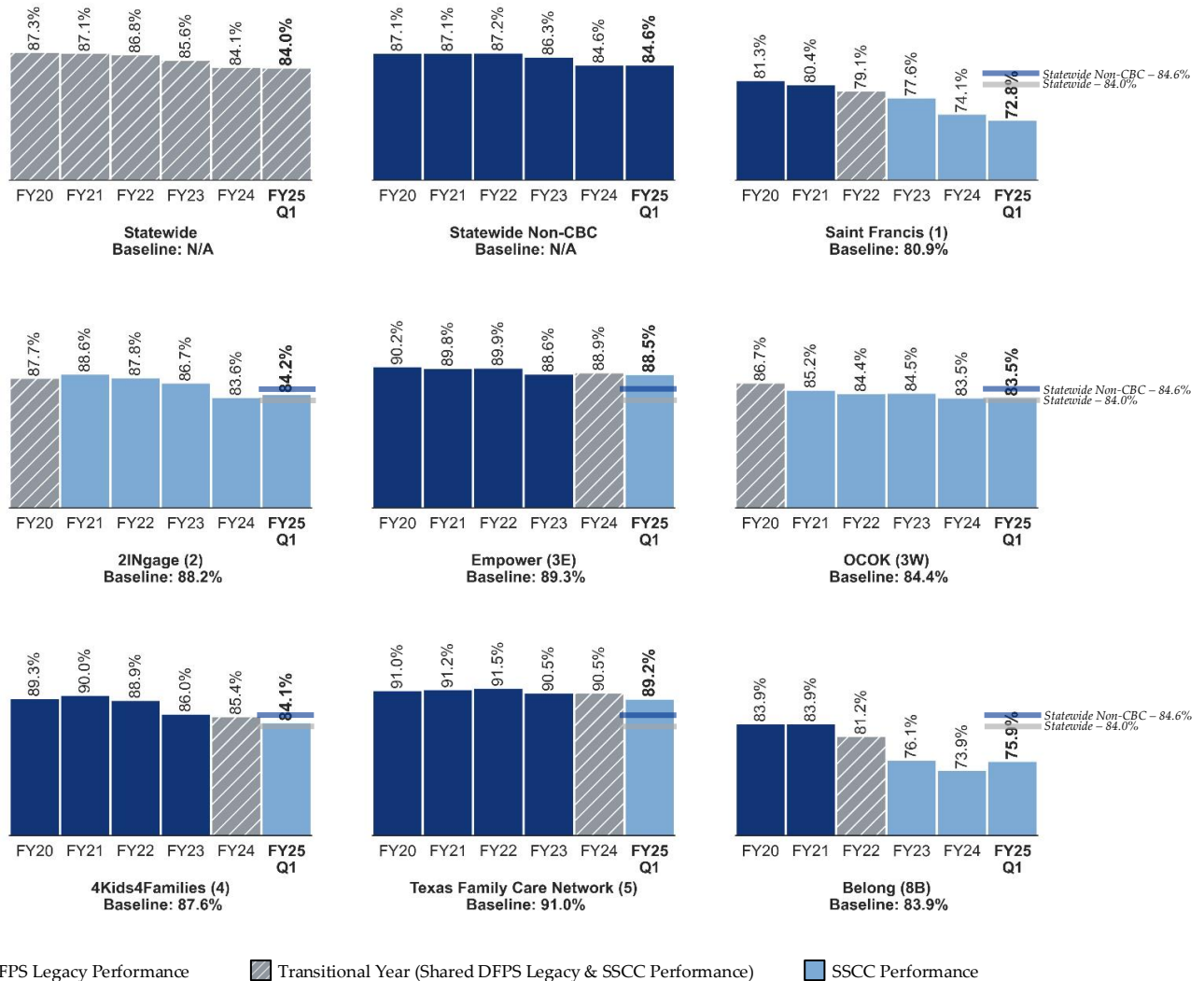
### Percentage of Placement Days in a Home Setting

This performance measure is defined as the percentage of placement days in a home setting for children and youth in conservatorship.

Overall, performance was mixed for this measure:

- **Statewide:** The percentage of placement days in a home setting decreased by 0.1% in FY25 Q1 compared to FY24.
- **Statewide Non-CBC:**<sup>14</sup> The percentage of placement days in a home setting remained stable in FY25 Q1 compared to FY24.
- **CBC:** Two SSCC providers show performance improvements in placing children in home settings in FY25 Q1 compared to FY24.

**Figure 9**  
 Placement Days in a Home Setting



<sup>14</sup> Statewide Non-CBC excludes the active CBC Community Areas of 1, 2, 3E, 3W, 4, 5, and 8B.

### Percent of Youth Age 16 or Older who have a Driver’s License or State Identification Card

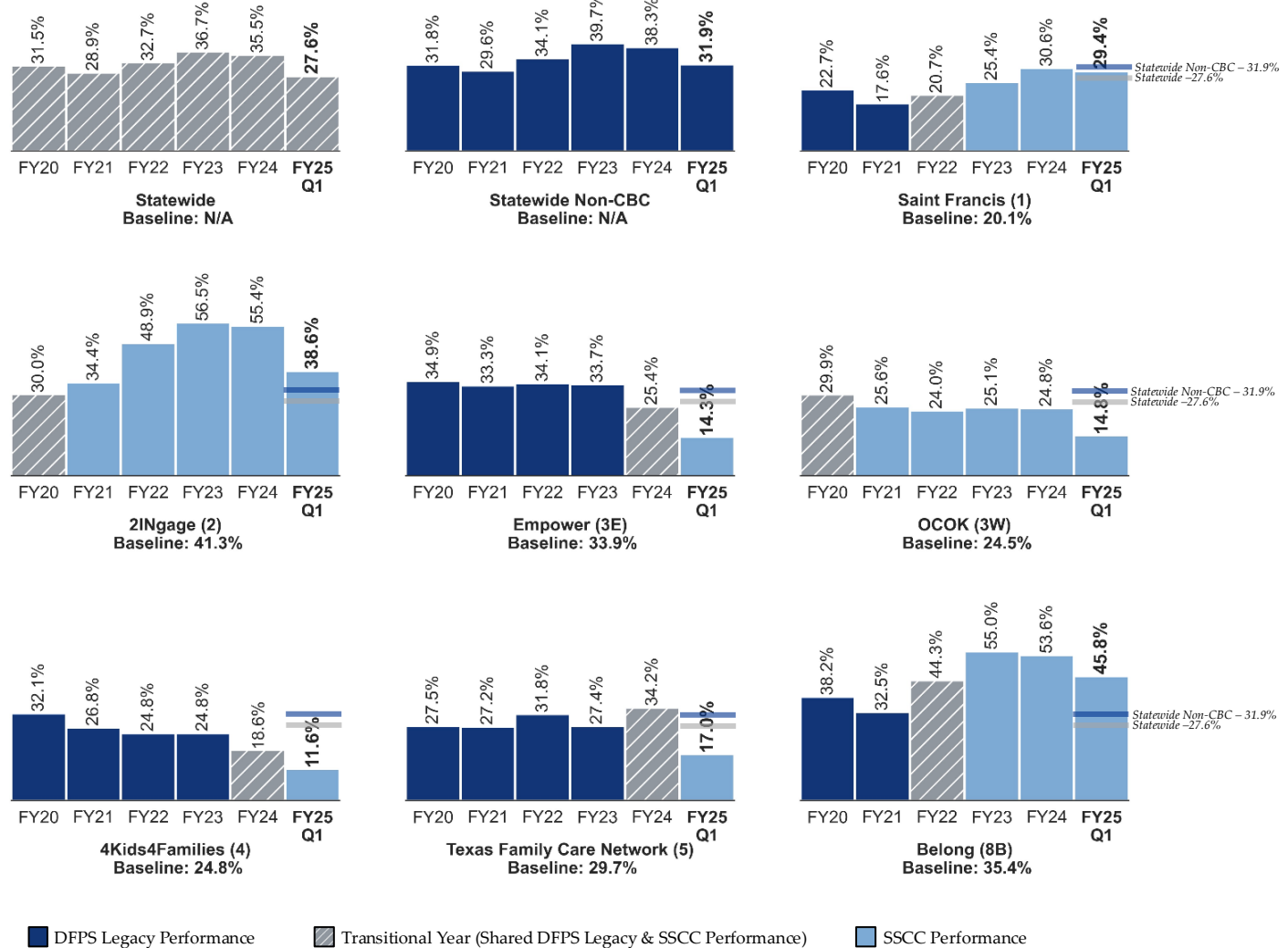
This performance measure is defined as the percentage of youth age 16 or older who have a driver’s license or state identification card.

Overall, performance declined for this measure:

- **Statewide:** The percentage of youth aged 16 or older who have a driver’s license or state identification card decreased in FY25 Q1 by 7.9% compared to FY24.
- **Statewide Non-CBC:**<sup>15</sup> The percentage of youth aged 16 or older who have a driver’s license or state identification card decreased in FY25 Q1 by 6.4% compared to FY24.
- **CBC:** The percentage of youth aged 16 or older who have a driver’s license or state identification card decreased for all of the CBC regions in FY25 Q1 compared to FY24.

**Figure 10**

*Youth Age 16 or Older with a Driver’s License or State Identification Card*



<sup>15</sup> Statewide Non-CBC excludes the active CBC Community Areas of 1, 2, 3E, 3W, 4, 5, and 8B.

### Percent of Youth who turned 18 and have completed required PAL Life Skills Training

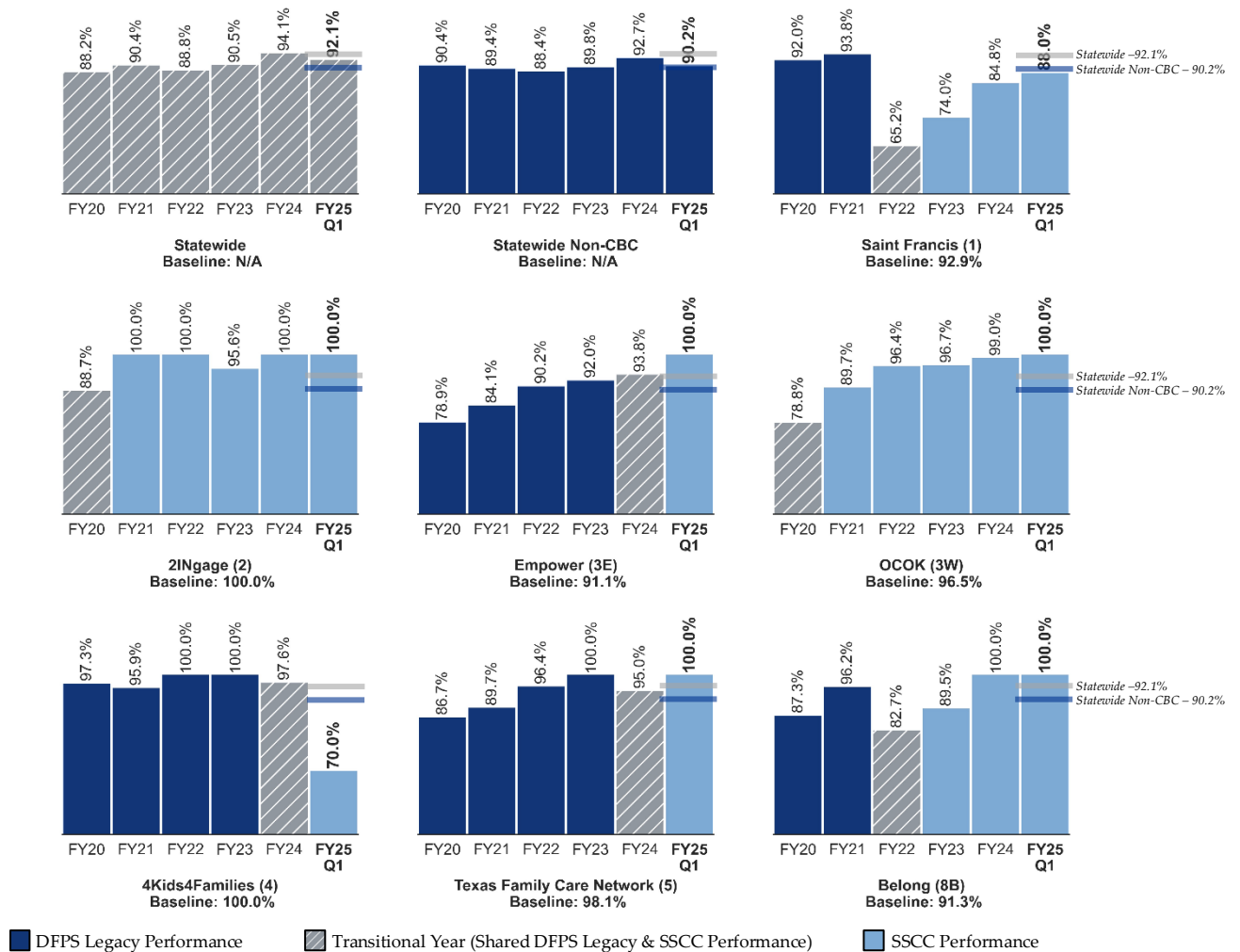
This performance measure is defined as the percentage of youth who turned 18 and have completed required PAL Life Skills Training.

Overall, performance was mixed for this measure:

- **Statewide:** The percentage of youth who turned 18 and have completed required PAL Life Skills Training decreased by 2.0% in FY25 Q1 compared to FY24.
- **Statewide Non-CBC:**<sup>16</sup> The percentage of youth who turned 18 and have completed required PAL Life Skills Training decreased by 2.5% in FY25 Q1 compared to FY24.
- **CBC:** Four SSSC providers show performance improvements in the percentage of youth who turned 18 and have completed required PAL Life Skills Training in FY25 Q1 compared to FY24. Five providers have 100% PAL completion rates in FY25 Q1.

**Figure 11**

*Youth Who Turned 18 and Have Completed Required PAL Life Skills Training*



<sup>16</sup> Statewide Non-CBC excludes the active CBC Community Areas of 1, 2, 3E, 3W, 4, 5, and 8B.

### Percent of Children who Exit to Permanency within 1 year

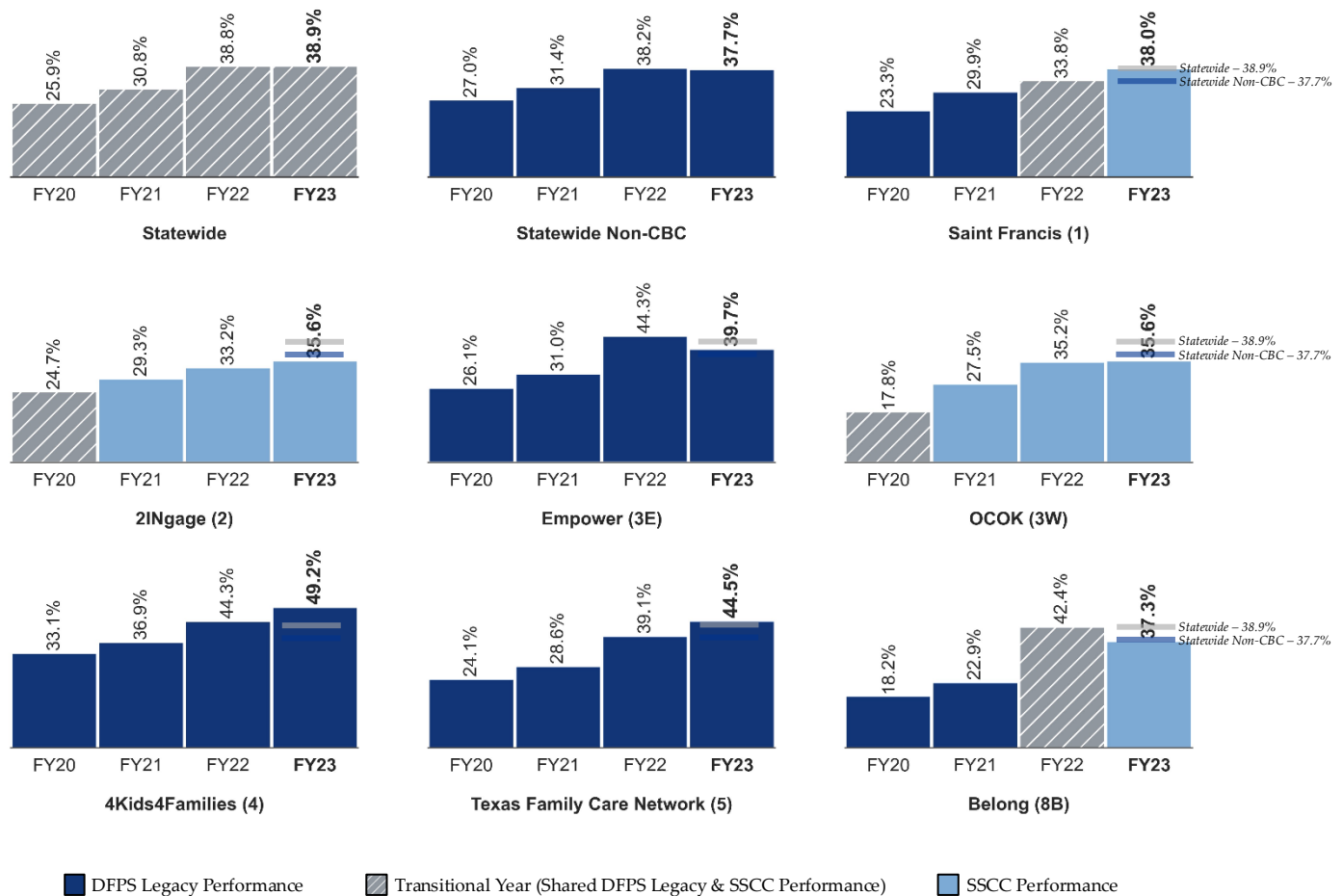
This performance measure is defined as the percentage of children who exit to permanency within 12 months of entering care. As described on page 18, a full year must pass after the last removal day before performance can be reported; thus, the most recent removal cohort with a full 12-month follow-up period is children removed in FY23.

Overall, performance improved for this measure:

- **Statewide:** The percentage of children who Exit to Permanency within 1 year increased by 0.1% in FY23 compared to FY22.
- **Statewide Non-CBC:**<sup>17</sup> The percentage of children who Exit to Permanency within 1 year decreased by 0.5% in FY23 compared to FY22.
- **CBC:** Five SSCC providers show performance improvements in the percentage of children who Exit to Permanency within 1 year in FY23 compared to FY22.

**Figure 12**

*Children Who Exit to Permanency Within 1 Year*



<sup>17</sup> Statewide Non-CBC excludes the active CBC Community Areas of 1, 2, 3E, 3W, 4, 5, and 8B.

### Percent of Children who Exit to Permanency within 18 months

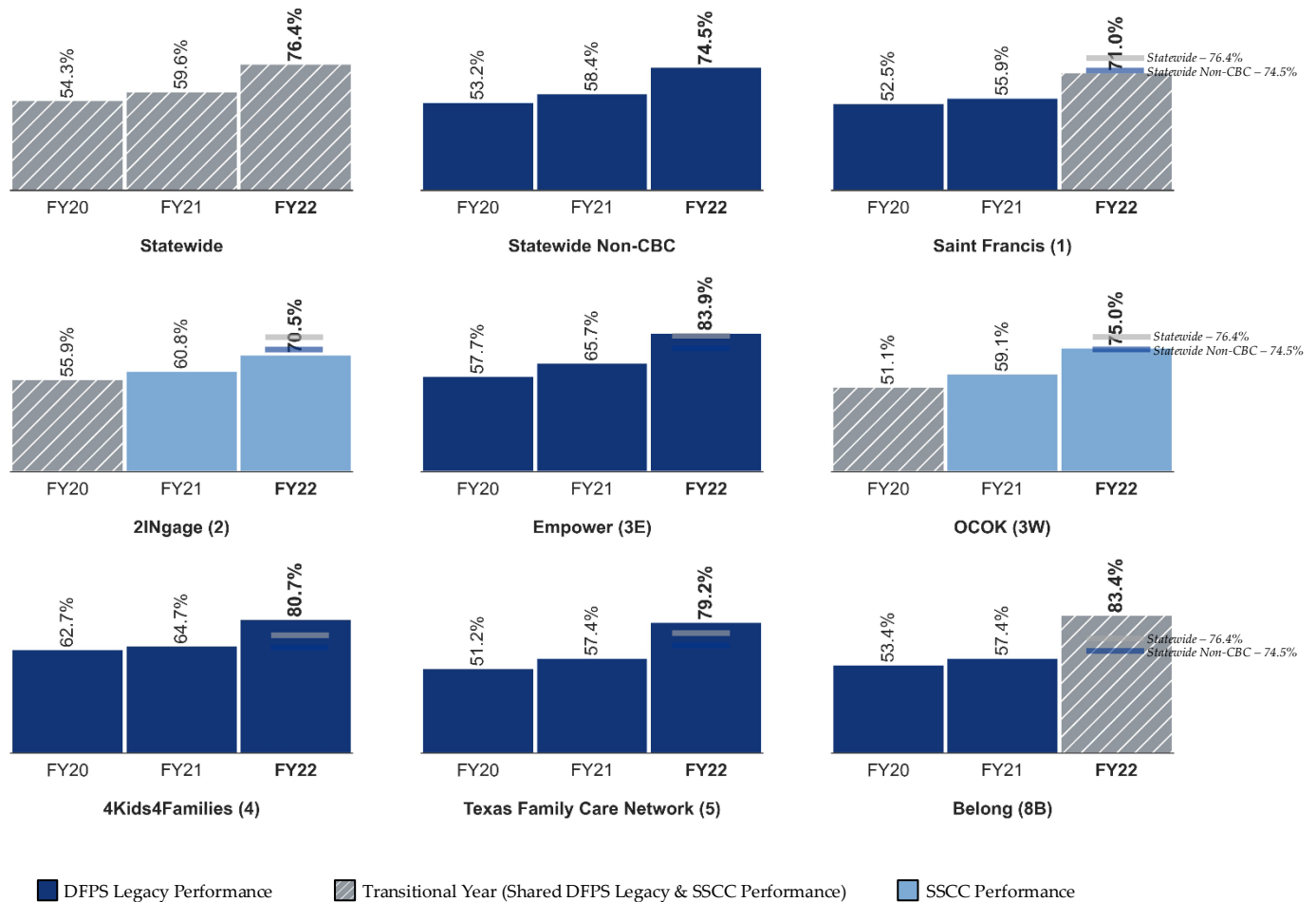
This performance measure is defined as the percentage of children who exit to permanency within 18 months of entering substitute care. As described on page 18, a full 18 months must pass after the last removal day before performance can be reported; thus, the most recent removal cohort with a full 18-month follow-up period is children removed in FY22.

Overall, performance improved for this measure:

- **Statewide:** The percentage of children who Exit to Permanency within 18 months increased by 16.8% in FY22 compared to FY21.
- **Statewide Non-CBC:**<sup>18</sup> The percentage of children who Exit to Permanency within 18 months increased by 16.1% in FY22 compared to FY21.
- **CBC:** All seven SSCC providers show performance improvements in the percentage of children who Exit to Permanency within 18 months in FY22 compared to FY21.

**Figure 13**

*Children Who Exit to Permanency Within 18 Months*



<sup>18</sup> Statewide Non-CBC excludes the active CBC Community Areas of 1, 2, 3E, 3W, 4, 5, and 8B.



### Percent of Children who Exit to Permanency within 2 years

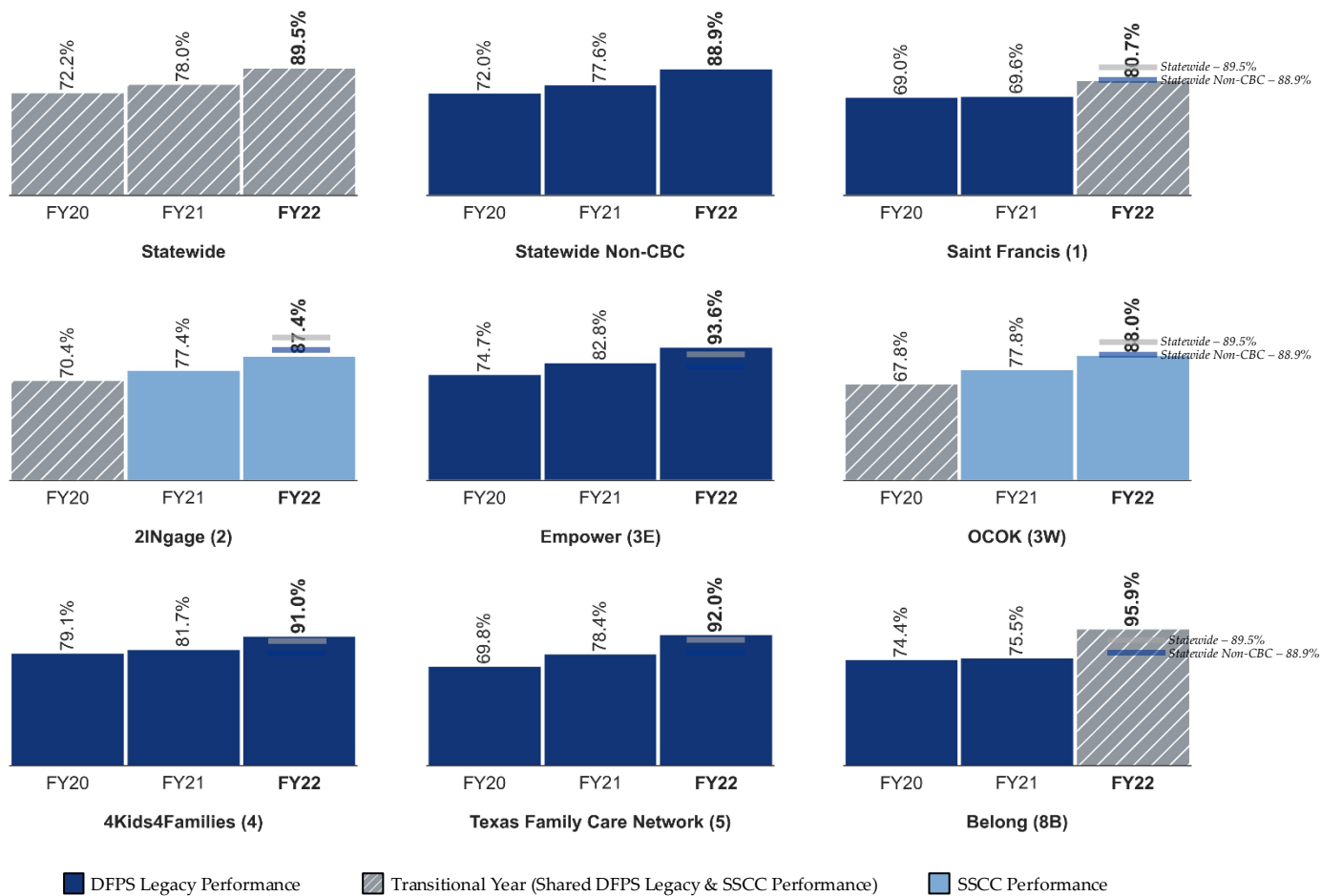
This performance measure is defined as the percentage of children who exit to permanency within 2 years of entering substitute care. As described on page 18, a full 24 months must pass after the last removal day before performance can be reported; thus, the most recent removal cohort with a full 24-month follow-up period is children removed in FY22.

Overall, performance improved for this measure:

- **Statewide:** The percentage of children who Exit to Permanency within 2 years increased by 11.5% in FY22 compared to FY21.
- **Statewide Non-CBC:**<sup>19</sup> The percentage of children who Exit to Permanency within 2 years increased by 11.3% in FY22 compared to FY21.
- **CBC:** All seven SSCC providers show performance improvements in the percentage of children who Exit to Permanency within 2 years in FY22 compared to FY21.

**Figure 14**

*Children Who Exit to Permanency Within 2 Years*



<sup>19</sup> Statewide Non-CBC excludes the active CBC Community Areas of 1, 2, 3E, 3W, 4, 5, and 8B.

### Percent of Children who Exit to Permanency within 3 Years

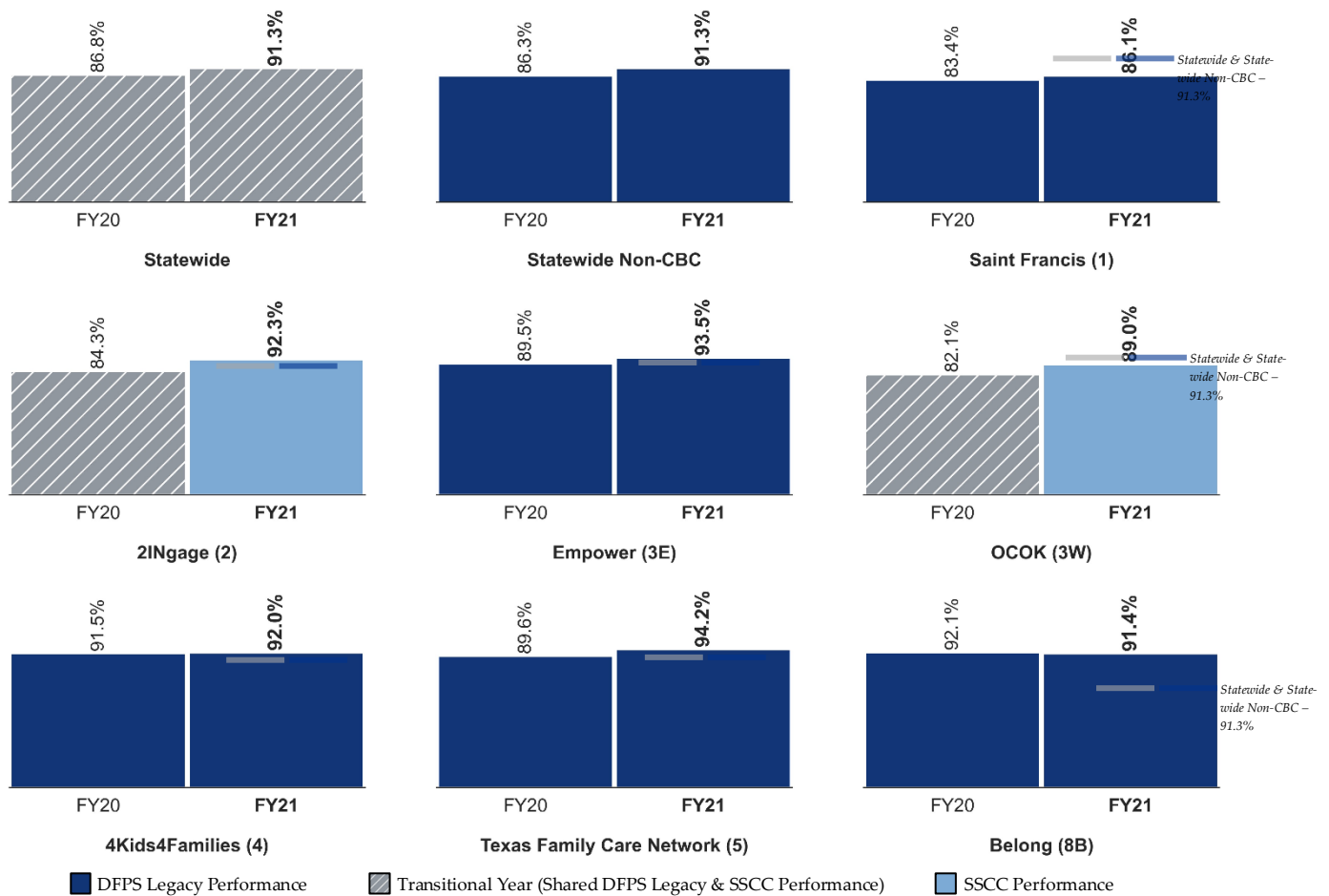
This performance measure is defined as the percentage of children who exit to permanency within 3 years of entering substitute care. As described on page 18, a full 36 months must pass after the last removal day before performance can be reported; thus, the most recent removal cohort with a full 36-month follow-up period is children removed in FY21.

Overall, performance has improved for this measure:

- **Statewide:** The percentage of children who Exit to Permanency within 3 years increased by 4.5% in FY21 compared to FY20.
- **Statewide Non-CBC:<sup>20</sup>** The percentage of children who Exit to Permanency within 3 years increased by 5.0% in FY21 compared to FY20.
- **CBC:** Six SSCC providers show performance improvements in the percentage of children who Exit to Permanency within 3 years in FY21 compared to FY20.

**Figure 15**

*Children Who Exit to Permanency Within 3 Years*



<sup>20</sup> Statewide Non-CBC excludes the active CBC Community Areas of 1, 2, 3E, 3W, 4, 5, and 8B.

### Percent of Children who Exit to Reunification within 1 year

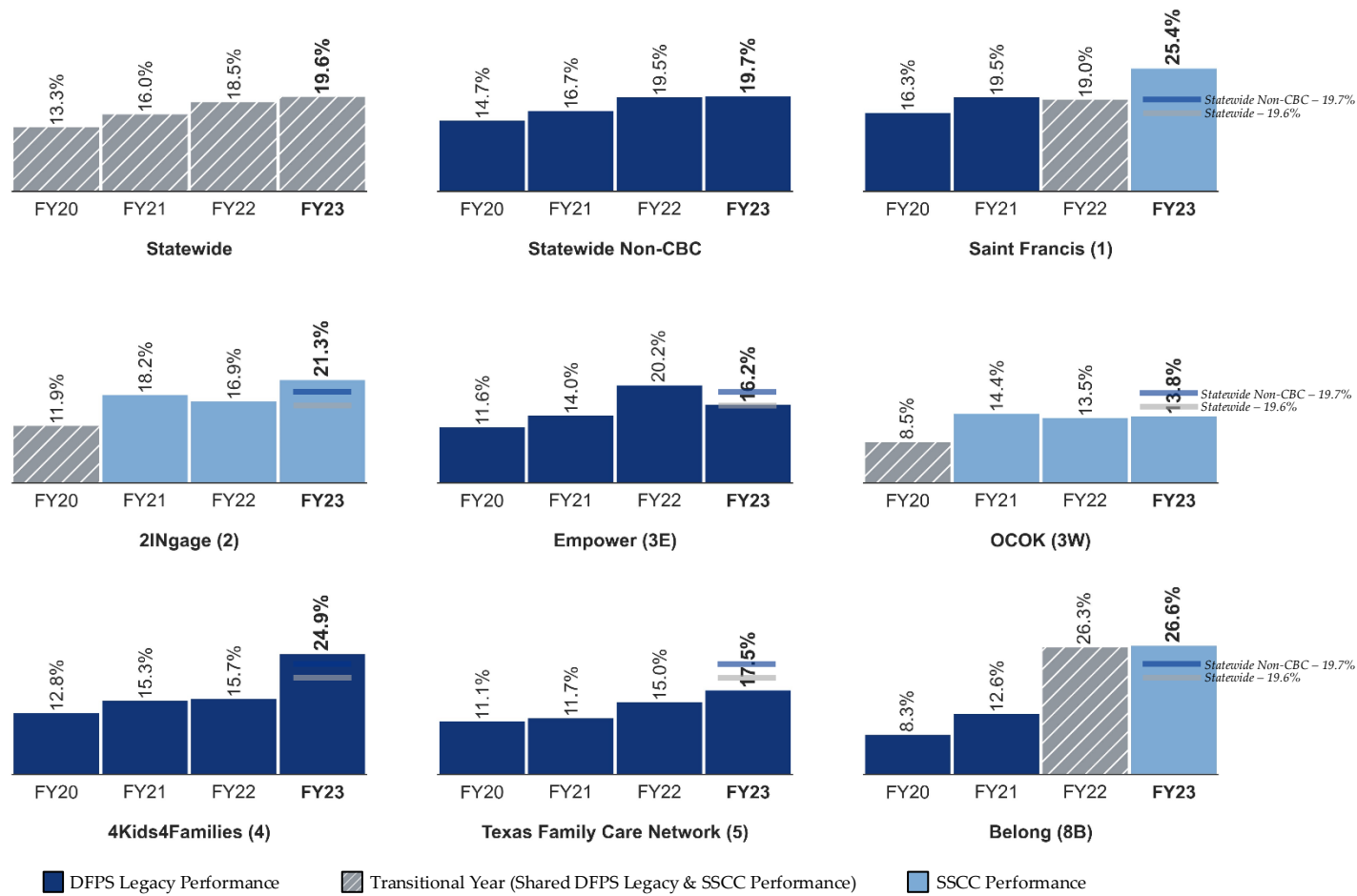
This performance measure is defined as the percentage of children who exit to reunification within 12 months of entering care. As described on page 18, a full year must pass after the last removal day before performance can be reported; thus, the most recent removal cohort with a full 12-month follow-up period is children removed in FY23.

Overall, performance improved for this measure:

- **Statewide:** The percentage of children who Exit to Reunification within 1 year increased by 1.1% in FY23 compared to FY22.
- **Statewide Non-CBC:**<sup>21</sup> The percentage of children who Exit to Reunification within 1 year increased by 0.2% in FY23 compared to FY22.
- **CBC:** Six SSCC providers show performance improvements in the percentage of children who Exit to Reunification within 1 year in FY23 compared to FY22.

**Figure 16**

*Children Who Exit to Reunification Within 1 Year*



<sup>21</sup> Statewide Non-CBC excludes the active CBC Community Areas of 1, 2, 3E, 3W, 4, 5, and 8B.

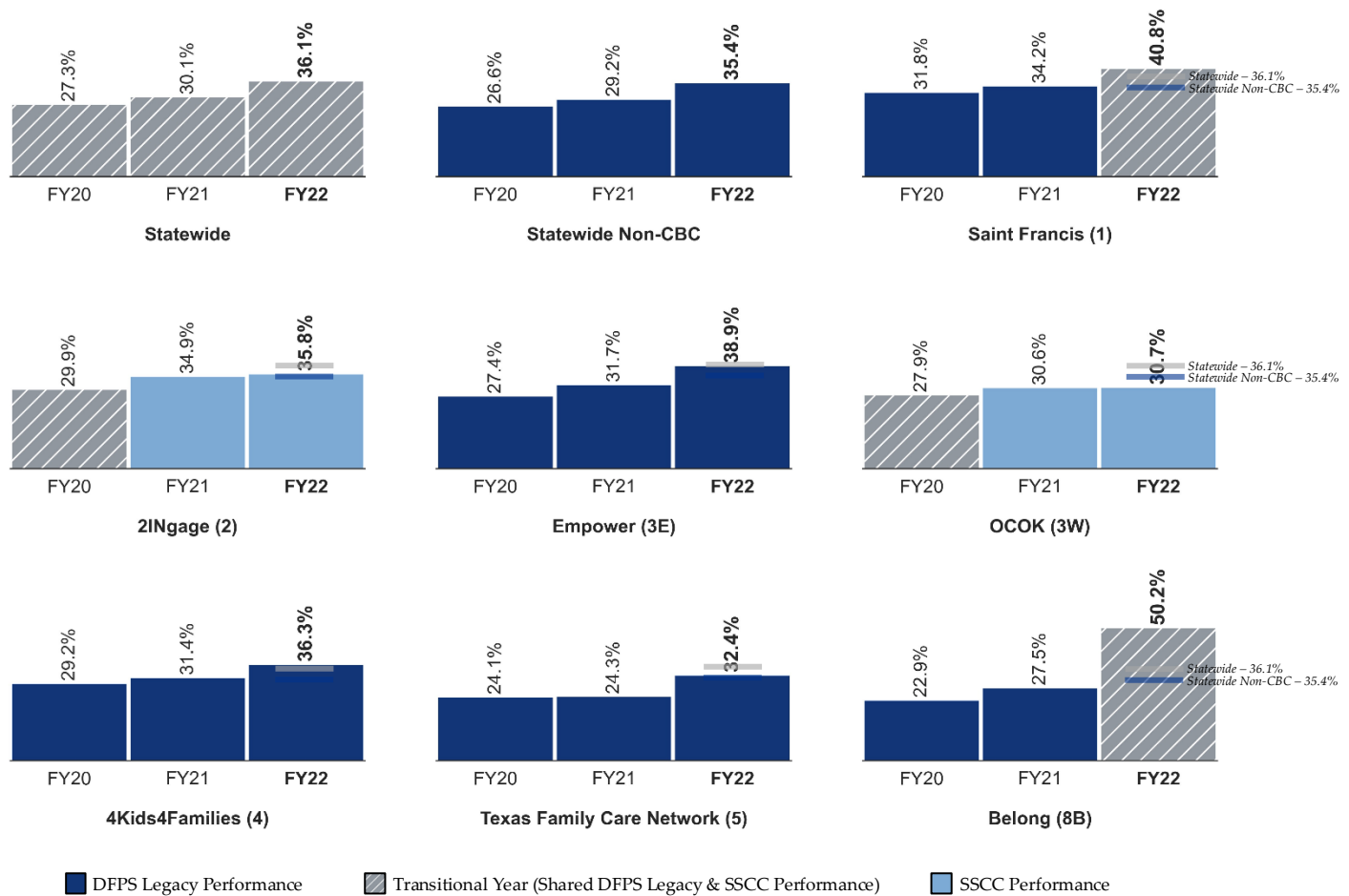
### Percent of Children who Exit to Reunification within 18 months

This performance measure is defined as the percentage of children who exit to reunification within 18 months of entering substitute care. As described on page 18, a full 18 months must pass after the last removal day before performance can be reported; thus, the most recent removal cohort with a full 18-month follow-up period is children removed in FY22.

Overall, performance improved for this measure:

- **Statewide:** The percentage of children who Exit to Reunification within 18 months increased by 6.0% in FY22 compared to FY21.
- **Statewide Non-CBC:**<sup>22</sup> The percentage of children who Exit to Reunification within 18 months increased by 6.2% in FY22 compared to FY21.
- **CBC:** All seven SSCC providers show performance improvements in the percentage of children who Exit to Reunification within 18 months in FY22 compared to FY21.

**Figure 17**  
 Children Who Exit to Reunification Within 18 Months



<sup>22</sup> Statewide Non-CBC excludes the active CBC Community Areas of 1, 2, 3E, 3W, 4, 5, and 8B.

### Percent of Children who Exit to Reunification within 2 years

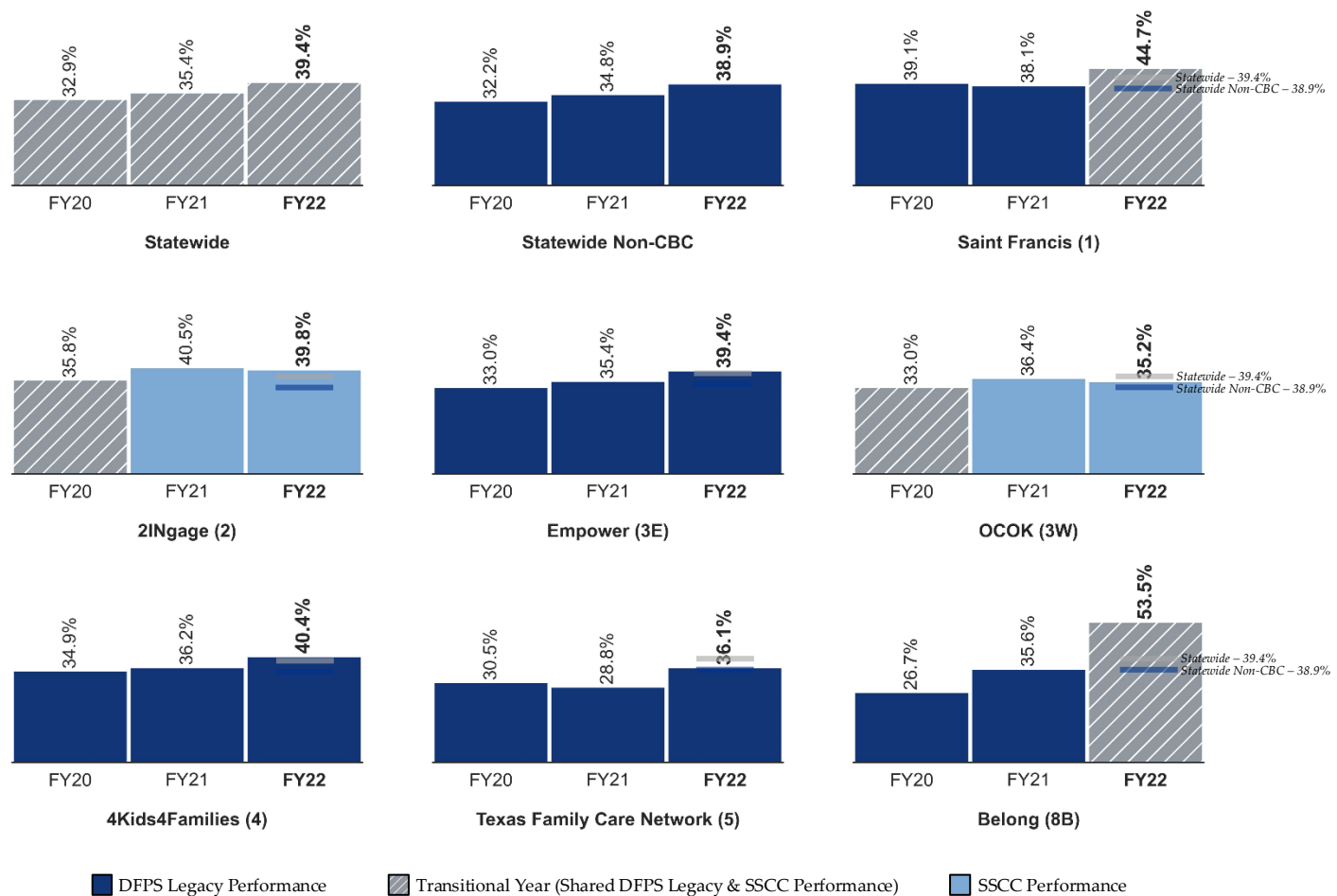
This performance measure is defined as the percentage of children who exit to reunification within 2 years of entering substitute care. As described on page 18, a full 24 months must pass after the last removal day before performance can be reported; thus, the most recent removal cohort with a full 24-month follow-up period is children removed in FY22.

Overall, performance improved for this measure:

- **Statewide:** The percentage of children who Exit to Reunification within 2 years increased by 4.0% in FY22 compared to FY21.
- **Statewide Non-CBC:**<sup>23</sup> The percentage of children who Exit to Reunification within 2 years increased by 4.1% in FY22 compared to FY21.
- **CBC:** Five SSCC providers show performance improvements in the percentage of children who Exit to Reunification within 2 years in FY22 compared to FY21.

**Figure 18**

*Children Who Exit to Reunification Within 2 Years*



<sup>23</sup> Statewide Non-CBC excludes the active CBC Community Areas of 1, 2, 3E, 3W, 4, 5, and 8B.

### Percent of Children who Exit to Reunification within 3 years

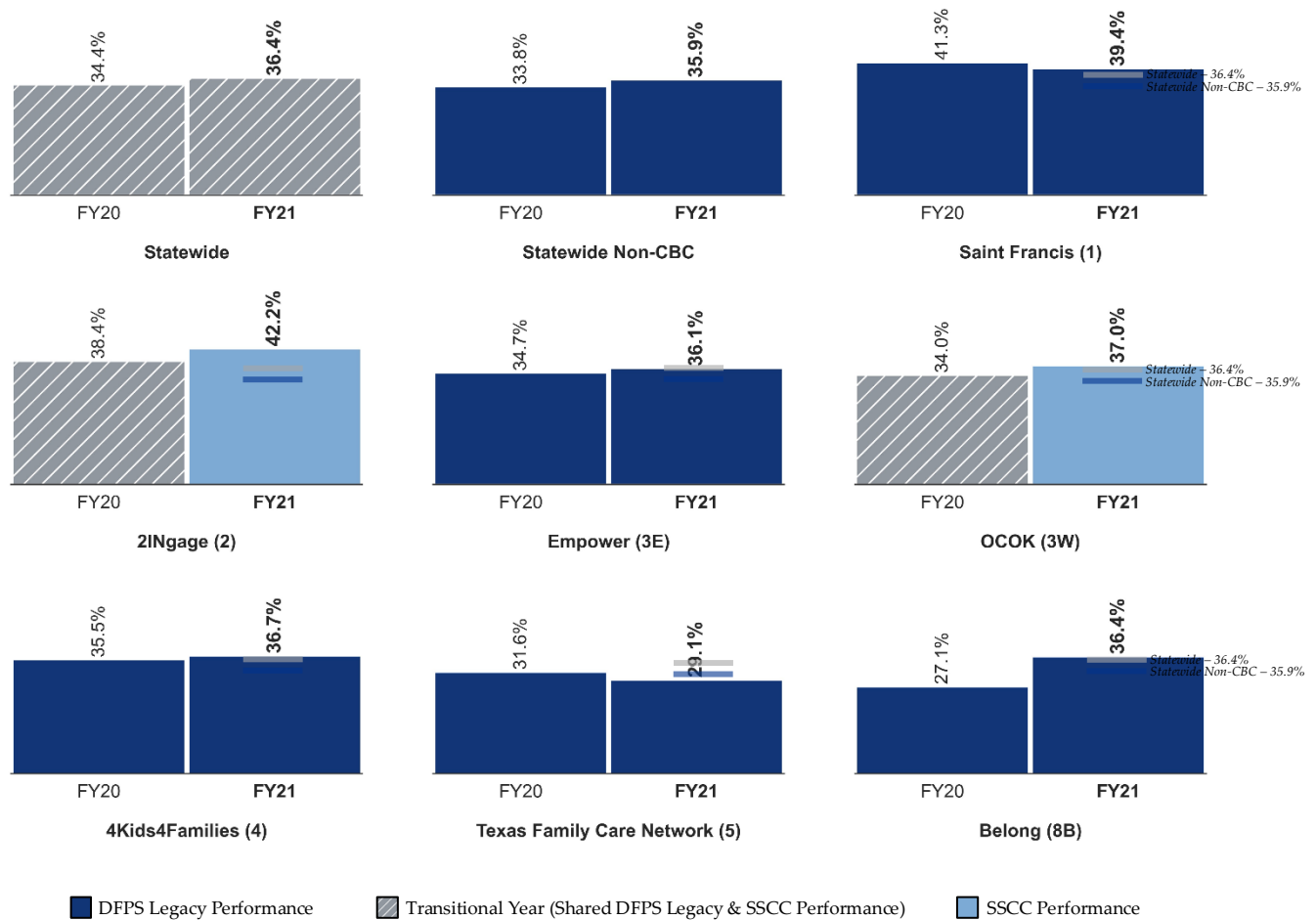
This performance measure is defined as the percentage of children who exit to reunification within 3 years of entering substitute care. As described on page 18, a full 36 months must pass after the last removal day before performance can be reported; thus, the most recent removal cohort with a full 36-month follow-up period is children removed in FY21.

Overall, performance improved for this measure:

- **Statewide:** The percentage of children who Exit to Reunification within 3 years increased by 2.0% in FY21 compared to FY20.
- **Statewide Non-CBC:**<sup>24</sup> The percentage of children who Exit to Reunification within 3 years increased by 2.1% in FY21 compared to FY20.
- **CBC:** Five SSCC providers show performance improvements in the percentage of children who Exit to Reunification within 3 years in FY21 compared to FY20.

**Figure 19**

*Children Who Exit to Reunification Within 3 Years*



<sup>24</sup> Statewide Non-CBC excludes the active CBC Community Areas of 1, 2, 3E, 3W, 4, 5, and 8B.

### Percentage of Children Placed with Kin at 60 Days after Removal

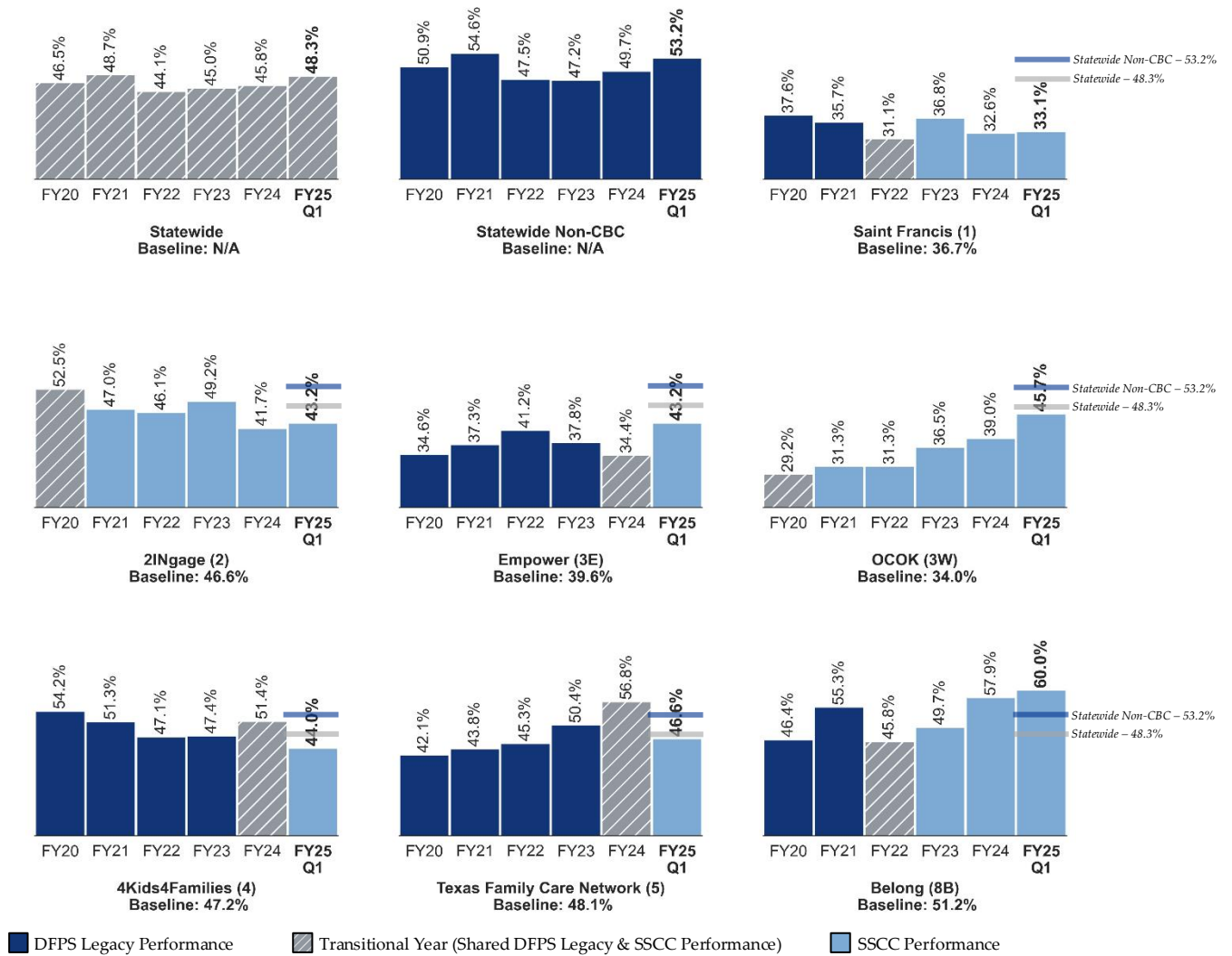
This performance measure is defined as the percentage of children placed with kin on the 60th day after removal.

Overall, performance improved for this measure:

- **Statewide:** The percentage of new removals placed with kin on the 60th day after removal increased by 2.5% in FY25 Q1 compared to FY24.
- **Statewide Non-CBC:**<sup>25</sup> The percentage of new removals placed with kin on the 60th day after removal increased by 3.5% in FY25 Q1 compared to FY24.
- **CBC:** Five SSCC providers show performance improvements in the percentage of new removals placed with kin on the 60th day after removal in FY25 Q1 compared to FY24.

**Figure 20**

*Children Placed with Kin at 60 Days After Removal*



<sup>25</sup> Statewide Non-CBC excludes the active CBC Community Areas of 1, 2, 3E, 3W, 4, 5, and 8B.

### Percent of Children who Exit to Permanency and have a new CPS Intervention Within 12 Months from Exit

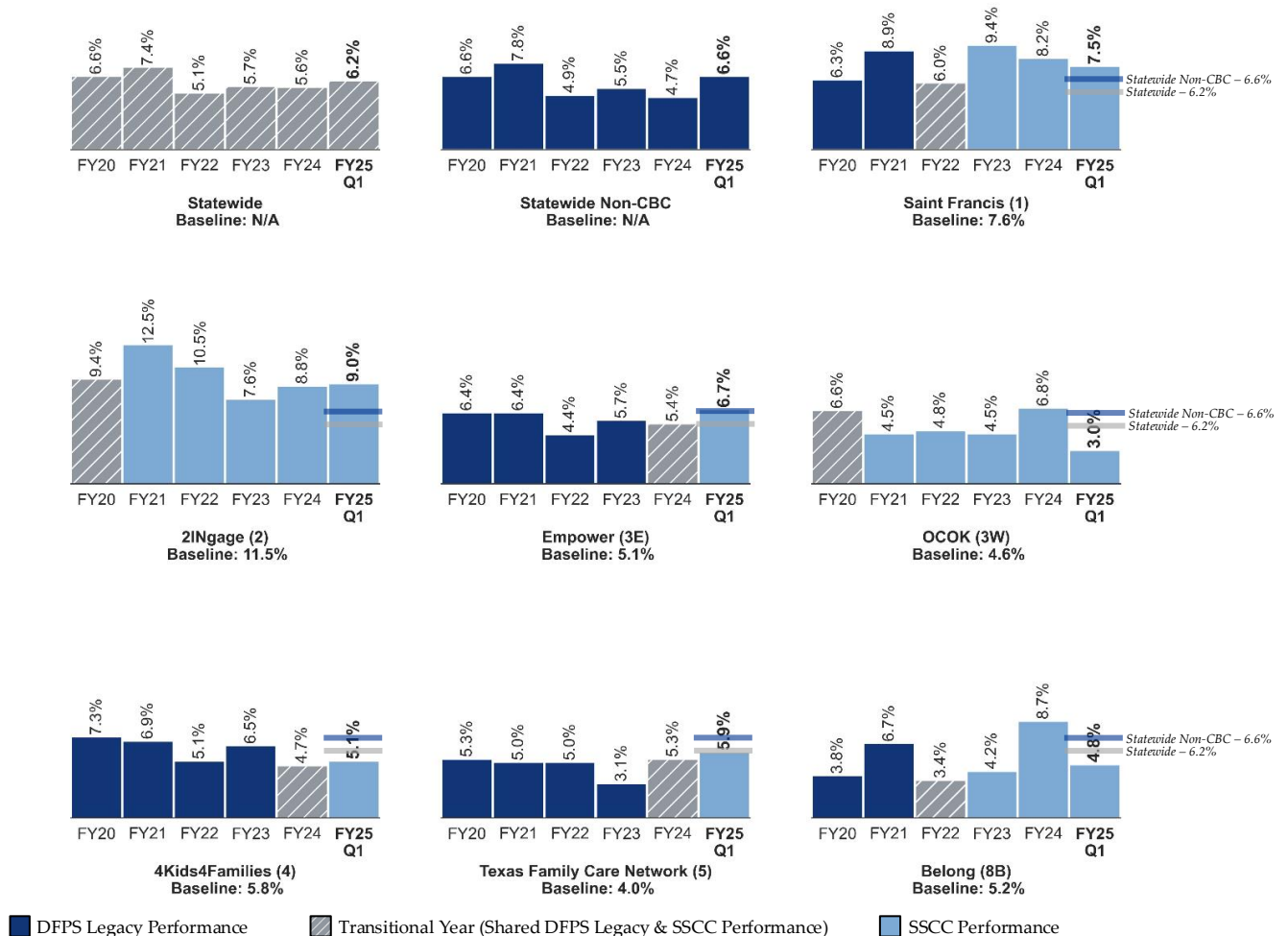
This performance measure is defined as the percentage of children who exit to permanency and have a new CPS intervention with 12 months from exit.

Overall, performance was mixed for this measure:

- **Statewide:** The performance increased by 0.6% in FY25 Q1 compared to FY24, indicating worsening performance.
- **Statewide Non-CBC:**<sup>26</sup> The performance increased by 1.9% in FY25 Q1 compared to FY24, indicating worsening performance.
- **CBC:** Three SSCC providers show performance improvements for this measure in FY25 Q1 compared to FY24.

**Figure 21**

*Children who Exit to Permanency and have a new CPS Intervention Within 12 Months from Exit*



<sup>26</sup> Statewide Non-CBC excludes the active CBC Community Areas of 1, 2, 3E, 3W, 4, 5, and 8B.



## **Recommendations**

Many of the issues listed in the “Factors Impacting Performance” section of this report are also highlighted as challenges to address through the goals in the [FY 2025 DFPS Annual Report](#), such as placement and service capacity shortages, workforce challenges, and the transition process. We have learned valuable lessons as regions have transitioned, and we are continually and collaboratively refining the processes with the SSCC providers based on this understanding.

### **Placement and Service Capacity Shortages**

DFPS will continue to focus on enhancing capacity statewide, both for placements and services, to meet the unique needs of children and youth in care and their families. In partnership with DFPS, HHSC continues to review and revise the minimum standards for Child Placing Agencies and General Residential Operations. This effort aims to improve statewide capacity by simplifying standards, which could attract and retain more providers. Additionally, DFPS’ commitment to prioritizing support for kinship caregivers is expected to create greater engagement and involvement from these caregivers. The agency's ongoing work to strengthen behavioral health supports statewide will ensure a more navigable system, spanning both legacy and SSCC programs, to better meet the diverse needs of children and families within their own communities.

### **Workforce Challenges**

Workforce challenges in child welfare are a prevalent and longstanding issue, and DFPS, in collaboration with the SSCC providers, are working to address these issues by sharing ideas and best practices. Recognizing the importance of retaining experienced staff, the SSCC providers have been proactive in collaborating to find solutions that can enhance workforce retention. To support these efforts, DFPS developed a comprehensive communication plan to keep DFPS staff informed sooner on transition planning. The plan equips Regional Directors with essential information, enabling them to provide timely feedback and updates to staff. Prior to Stage II, additional processes have been put in place, including townhall meetings and a more prominent role of Human Resources to highlight comparable benefits and support staff retention. These combined efforts aim to create a more supportive and informed environment for staff interested in transitioning to the SSCC providers.

### **Transition Process**

The transition process has been adapted over time through lessons learned from the SSCC providers and stakeholders. OCBCT conducts surveys to gather feedback, and DFPS entered into an Interagency Contract with the University of Texas at Austin to complete a CBC process evaluation. This evaluation will focus on the implementation of CBC in Regions 1, 2, 3b (all counties in Region 3W with the exception of Cooke, Denton, and Wise), and 8B to develop process improvement recommendations and enhancements to guide future implementation.

The final deliverable is due on August 31, 2025. DFPS and OCBCT are exploring additional supports post-transition to stabilize the SSCC providers more quickly and their workforce.

Continued engagement with the SSCC providers should also occur to ensure that the factors and drivers that contribute to performance are identified, as the SSCC providers bring their unique approaches and perspectives to providing these services and supports statewide.

# Appendix A: Current Community-Based Care Community Areas

