







# CHILDREN WITHOUT PLACEMENT AGENCY EFFORTS

**PRIORITY**

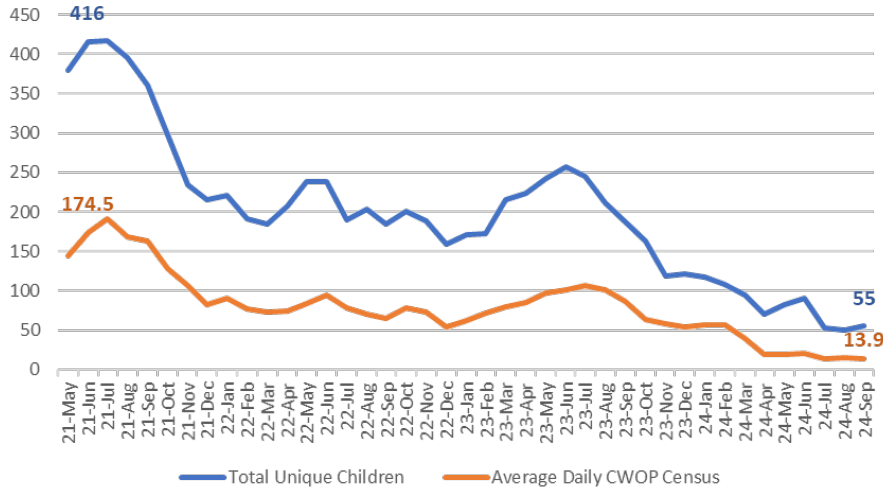
**GOAL**

**ACTIONS**

	<p><b>CARE</b></p> <p>Augment the structure and staffing of DFPS Supervision sites, providing an environment that incentivizes positive youth behaviors while prioritizing the safety of both youth and caseworkers.</p>	<ul style="list-style-type: none"> <li>• <b>Pilot in Regions 6 &amp; 7</b> targeted at behavior modification for youth to establish added structure, youth incentives, and staff responsibilities</li> <li>• Additional staff training for pilot participants, including de-escalation techniques</li> <li>• Hiring dedicated positions</li> <li>• Increased <b>temporary staffing</b></li> <li>• Placement staffings</li> <li>• <b>Expediting placement referrals</b> to Residential Treatment Placement Coordinators and for Child Specific Contract searches</li> <li>• Law enforcement engagement</li> <li>• <b>Clinical coordinators</b> to support with caseworker tasks when a child/youth is in DFPS Supervision</li> </ul>	<ul style="list-style-type: none"> <li>• Policy updates to support staff wellbeing by <b>limiting the number of DFPS Supervision shifts</b> allowable</li> <li>• <b>Trafficking assessment</b></li> <li>• Missing youth searches</li> <li>• <b>DFPS Temporary Housing Implementation Plan</b></li> <li>• <b>Convening of State Agencies and Stakeholders</b></li> <li>• <b>Pathways to Placement</b></li> <li>• <b>Interagency Critical Case Meetings</b></li> <li>• <b>Children’s Behavioral Health Strategic Plan Subcommittee</b></li> <li>• <b>Placement Support Staffings</b></li> <li>• Placement <b>Stabilization and Support Team</b></li> </ul>
	<p><b>CAPACITY</b></p> <p>Enhance the capacity and stability of kinship and licensed placements while streamlining DFPS placement processes.</p>	<ul style="list-style-type: none"> <li>• Qualified Residential Treatment Program (<b>QRTP</b>), Intensive Psychiatric Stabilization Program (<b>IPSP</b>), and Treatment Family Foster Care (<b>TFFC</b>) expansion</li> <li>• Temporary Emergency Placement (<b>TEP</b>) expansion</li> <li>• Placement process improvement and <b>additional staffing</b></li> <li>• <b>Emergency Shelter Partnership</b></li> </ul>	<ul style="list-style-type: none"> <li>• Training for staff regarding engaging kin and placement with kinship.</li> <li>• Developing strategies to increase 1st placements with kinship</li> <li>• <b>Updating kinship policies to strengthen kinship practices</b></li> <li>• Expanded and flexible Kinship spending</li> <li>• <b>Provider Clinical and Programmatic Support</b></li> </ul>
	<p><b>SERVICES</b></p> <p>Support programs and services to meet the specific needs of youth in DFPS Supervision, with a focus on preparing older youth for successful transitions to independence and self-sufficiency within appropriate placements.</p>	<ul style="list-style-type: none"> <li>• Focus on services and support, such as preparation for adult living, housing, job opportunities, and other <b>basic life skills</b></li> <li>• <b>Utilize behavioral health funding for youth crisis outreach and extended inpatient hospital support</b></li> <li>• <b>Partnering youth with mentor support</b></li> </ul>	<ul style="list-style-type: none"> <li>• Ensure every youth is referred for a <b>Circle of Support</b></li> <li>• Providing up to date <b>mental health resources</b> to staff through broadcasts and Job Aids</li> <li>• Ensure therapeutic supports are scheduled for youth regardless of participation</li> </ul>
	<p><b>DIVERSION</b></p> <p>Implement actions to divert children and youth from entering state custody as appropriate through effective intervention strategies and alternative support systems, promoting family preservation and community-based solutions.</p>	<ul style="list-style-type: none"> <li>• Collaborate with HHSC to support access to behavioral health resources and additional funding to prevent removals as a result of refusal to accept parental responsibility</li> <li>• Increased use of <b>Alternative Response</b></li> <li>• Increased use of Behavioral Health Resources</li> </ul>	<ul style="list-style-type: none"> <li>• <b>Focus on least restrictive environment</b></li> <li>• <b>Partnership with Juvenile Justice</b></li> <li>• Increased communication with psychiatric hospitals</li> <li>• Emphasis on first placement with kinship</li> </ul>

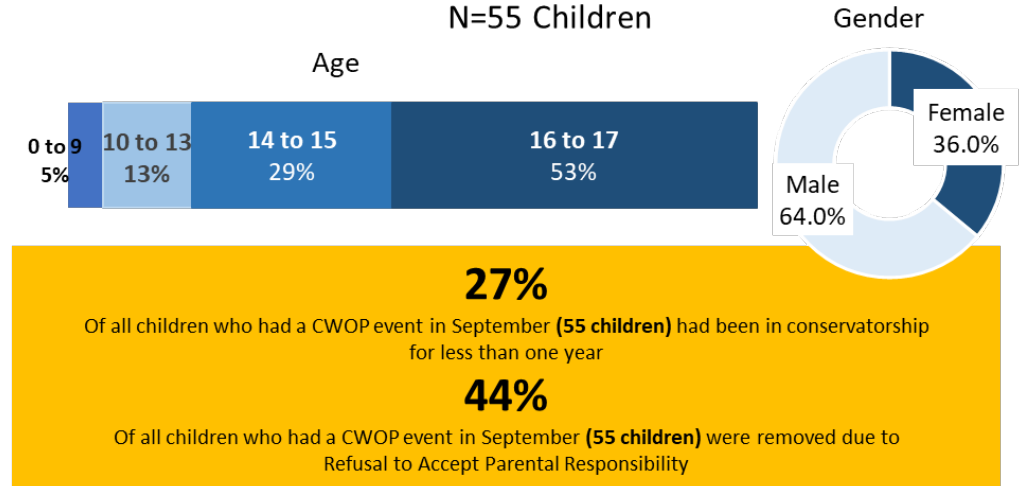
# Children Without Placement Data

## Total Children Without Placement



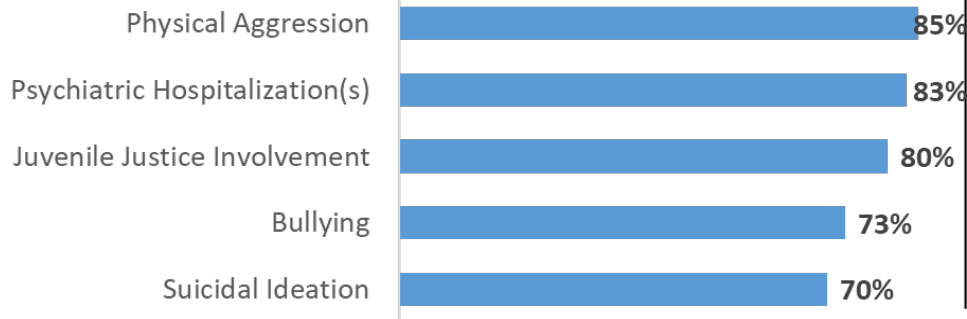
Definition: A child without placement event refers to when a child or youth was without placement for at least two consecutive, uninterrupted nights. If a youth goes missing during a child without placement event, the youth will be in a missing status rather than a child without placement event to ensure protocols are followed to ensure the safe return of a youth. If the youth returns from the missing event, a new event starts after at least two consecutive, uninterrupted nights.

## Children Without Placement September 2024 N=55 Children



## Top 5 Child Characteristics/Needs September 2024 N=80 Events

Children without placement have complex needs



## Subsequent CWOP Event for CWOP Events Ending in June 2024 N= 89 events

