



CHILDREN WITHOUT PLACEMENT AGENCY EFFORTS

PRIORITY

GOAL

ACTIONS



CARE

Augment the structure and staffing of DFPS Supervision sites, providing an environment that incentivizes positive youth behaviors while prioritizing the safety of both youth and caseworkers.

- **DFPS Temporary Emergency Care Pilot Site**
- Additional training for dedicated emergency care site staff, including de-escalation techniques
- Hiring dedicated positions
- Increased **temporary staffing**
- **Expediting placement referrals** to Residential Treatment Placement Coordinators and for Child Specific Contract searches
- Law enforcement engagement
- **Clinical coordinators** to support with caseworker tasks when a child/youth is in DFPS Supervision
- Placement Support Staffing

- Policy updates to support staff wellbeing by **limiting the number of DFPS Supervision shifts** allowable
- **Trafficking assessment**
- Missing youth searches
- **Convening of State Agencies and Stakeholders**
- **Pathways to Placement**
- **Interagency Critical Case Meetings**
- **Children's Behavioral Health Strategic Plan Subcommittee**
- Placement **Stabilization and Support Team**



CAPACITY

Enhance the capacity and stability of kinship and licensed placements while streamlining DFPS placement processes.

- Evaluating Intensive Psychiatric Stabilization Program (**IPSP**) and Treatment Family Foster Care (**TFFC**)
- Temporary Emergency Placement (**TEP**) expansion
- Temporary Transitional Beds
- Emergency Shelter Partnership
- Placement process improvement and **additional staffing**

- Training for staff regarding engaging kin and placement with kinship.
- Developing strategies to increase 1st placements with kinship
- **Updating kinship policies** to strengthen kinship practices
- Expanded and flexible Kinship spending
- Kinship Behavioral Health Grants
- **Provider Clinical and Programmatic Support**



SERVICES

Support programs and services to meet the specific needs of youth in DFPS Supervision, with a focus on preparing older youth for successful transitions to independence and self-sufficiency within appropriate placements.

- Focus on services and support, such as preparation for adult living, housing, job opportunities, and other **basic life skills**
- Partner with HHSC on **state operated residential treatment facility**
- **Utilize behavioral health funding for youth crisis outreach and extended inpatient hospital support**
- Partnering youth with **mentor support**

- Ensure every youth is referred for a **Circle of Support**
- Providing up to date **mental health resources** to staff through broadcasts and Job Aids
- Ensure therapeutic supports are scheduled for youth regardless of participation



DIVERSION

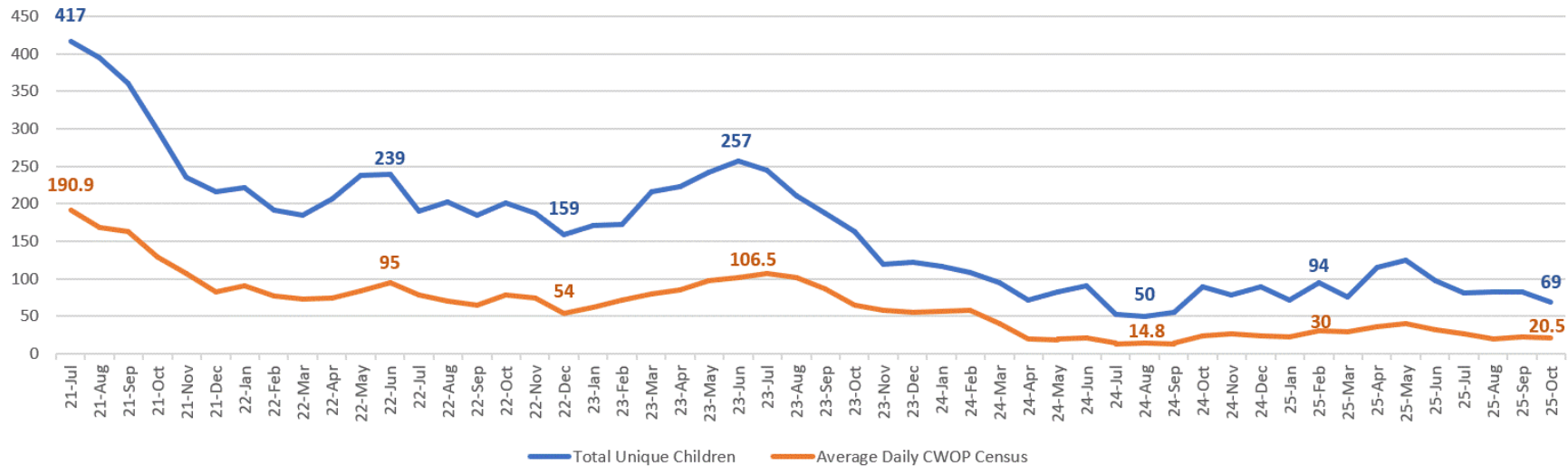
Implement actions to divert children and youth from entering state custody as appropriate through effective intervention strategies and alternative support systems, promoting family preservation and community-based solutions.

- Collaborate with HHSC to support access to behavioral health resources and additional funding to prevent removals as a result of refusal to accept parental responsibility
- Increased use of **Alternative Response**
- Increased use of Behavioral Health Resources

- Focus on **least restrictive environment**
- **Partnership with Juvenile Justice**
- Increased communication with psychiatric hospitals
- Emphasis on first placement with kinship

Children Without Placement Data

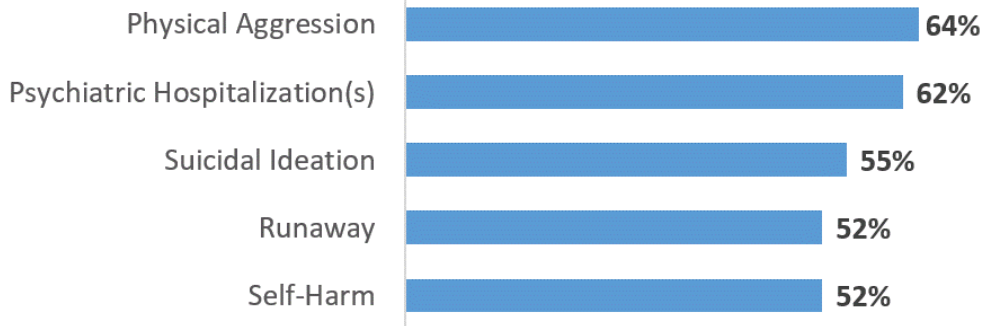
Total Children Without Placement



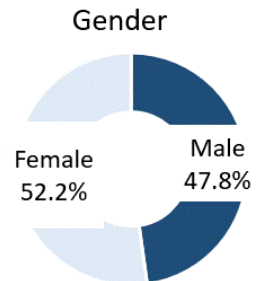
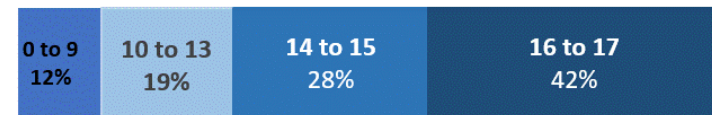
Definition: A child without placement event refers to when a child or youth was without placement for at least two consecutive, uninterrupted nights. If a youth goes missing during a child without placement event, the youth will be in a missing status rather than a child without placement event to ensure protocols are followed to ensure the safe return of a youth. If the youth returns from the missing event, a new event starts after at least two consecutive, uninterrupted nights.

Top 5 Child Characteristics/Needs October 2025 N=73 Events

Children without placement have complex needs



Children Without Placement October 2025 N=69 Children



43%

Of all children who had a CWOP event in October 2025 (**69 children**) had been in conservatorship for less than one year

29%

Of all children who had a CWOP event in October 2025 (**69 children**) were removed due to Refusal to Accept Parental Responsibility