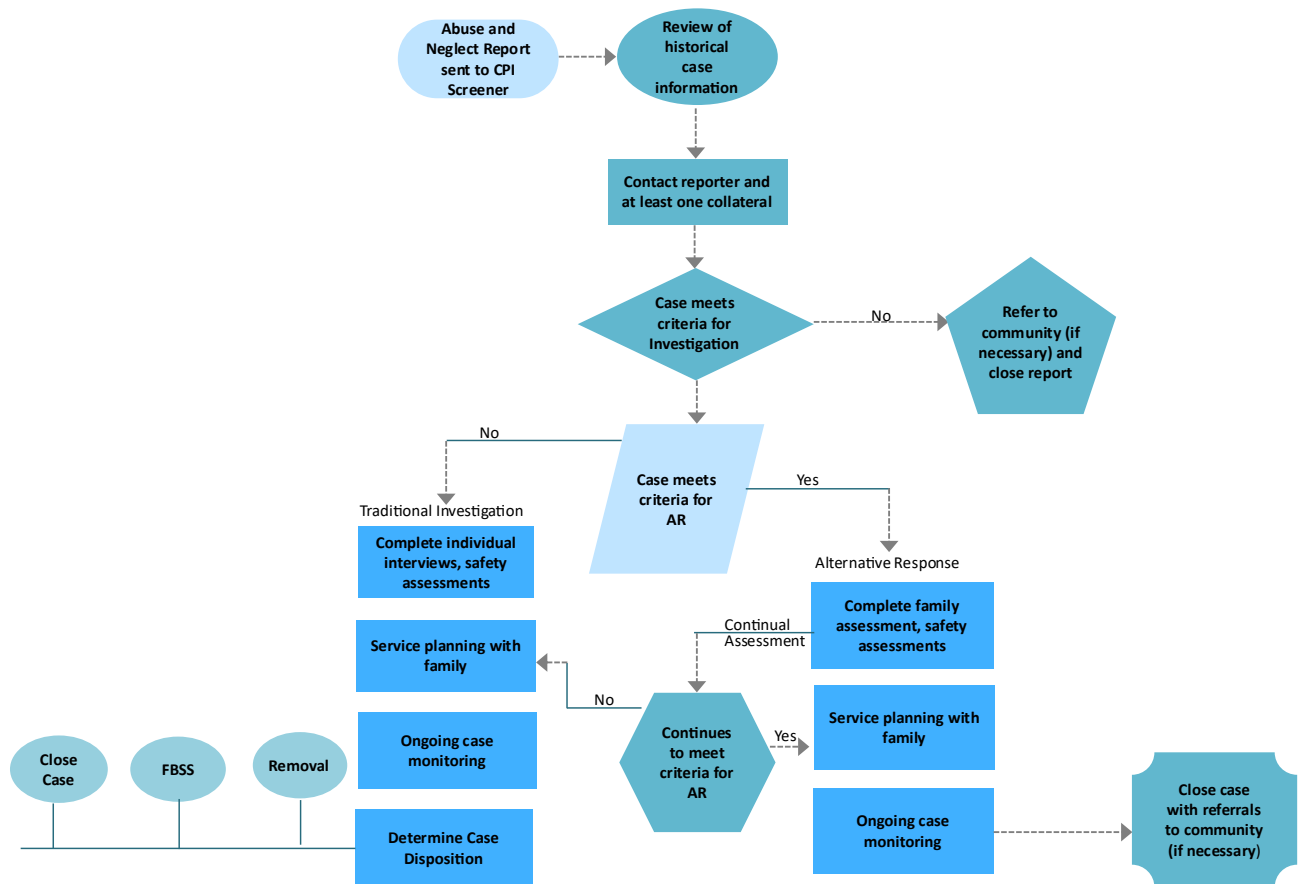


Alternative Response (AR) Model



Alternative Response (AR) Model Accessible Narrative-

1. Abuse and Neglect Report sent to CPI Screener: The process begins when a report of abuse or neglect is sent to the CPI Screener.
2. Review of Historical Case Information: The screener reviews historical case data related to the report.
3. Contact Reporter and at least one Collateral: The screener contacts the person who made the report and at least one collateral source for more information.
4. Decision Point – Does the case meet criteria for investigation?
 - If No: Refer the family to community resources (if necessary) and close the report.
 - If Yes: Proceed to determine if the case meets criteria for Alternative Response (AR).
5. Decision Point – Does the case meet criteria for AR?
 - If No (Traditional Investigation path):
 - Complete individual interviews and safety assessments.
 - Conduct service planning with the family.
 - Continue ongoing case monitoring.
 - Determine final case disposition, which may result in case closure, Family Based Safety Services (FBSS), or removal.
 - If Yes (Alternative Response path):
 - Complete a family assessment and safety assessments.
 - Conduct service planning with the family.
 - Continue ongoing case monitoring.
 - Conduct continual assessment to determine if the case continues to meet AR criteria.
 - If the case no longer meets AR criteria, switch to the traditional investigation path.
 - If the case continues to meet AR criteria, proceed with ongoing case monitoring and close the case with referrals to community services if needed.